

For Research Use Only

# AP4B1 Polyclonal antibody

Catalog Number: 16313-1-AP



## Basic Information

### Catalog Number:

16313-1-AP

### Size:

450 ug/ml

### Source:

Rabbit

### Isotype:

IgG

### Immunogen Catalog Number:

AG9348

### GenBank Accession Number:

BC014146

### GeneID (NCBI):

10717

### UNIPROT ID:

Q9Y6B7

### Full Name:

adaptor-related protein complex 4,  
beta 1 subunit

### Calculated MW:

739 aa, 83 kDa

### Observed MW:

75-83 kDa

### Purification Method:

Antigen affinity purification

### Recommended Dilutions:

WB 1:500-1:1000

IP 0.5-4.0 ug for 1.0-3.0 mg of total  
protein lysate

## Applications

### Tested Applications:

WB, IP, ELISA

### Species Specificity:

human

### Positive Controls:

WB : HeLa cells, MCF-7 cells, MDA-MB-231 cells, MDA-MB-453s cells

IP : HeLa cells,

## Background Information

Adaptor protein (AP) complex is a component of intracellular protein transport. The AP4 complex is involved in sorting transmembrane cargo proteins into transport vesicles for trans-Golgi network export. AP4B1 is a member of the AP4 complex, which also includes AP4E1, AP4M1 and AP4S1. Loss-of-function variants in any of these four members can lead to AP-4-associated hereditary spastic paraplegia (HSP), a neurodegenerative disorder (PMID: 30543385). This antibody recognizes AP4B1.

## Storage

### Storage:

Store at -20°C. Stable for one year after shipment.

### Storage Buffer:

PBS with 0.02% sodium azide and 50% glycerol pH 7.3.

Aliquoting is unnecessary for -20°C storage

For technical support and original validation data for this product please contact:

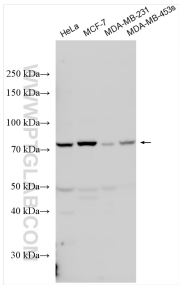
T: 4006900926

E: [Proteintech-CN@ptglab.com](mailto:Proteintech-CN@ptglab.com)

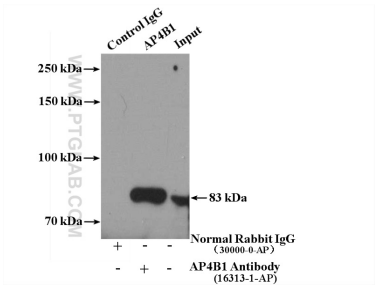
W: [ptgcn.com](http://ptgcn.com)

This product is exclusively available under Proteintech Group brand and is not available to purchase from any other manufacturer.

Selected Validation Data



Various lysates were subjected to SDS PAGE followed by western blot with 16313-1-AP (AP4B1 antibody) at dilution of 1:500 incubated at room temperature for 1.5 hours.



IP result of anti-AP4B1 (IP:16313-1-AP, 4ug; Detection:16313-1-AP 1:300) with HeLa cells lysate 3200ug.