

For Research Use Only

GCAT Polyclonal antibody

Catalog Number: 16317-1-AP **1 Publications**



Basic Information

Catalog Number:

16317-1-AP

Size:

350 µg/ml

Source:

Rabbit

Isotype:

IgG

Immunogen Catalog Number:

AG9367

GenBank Accession Number:

BC014457

GeneID (NCBI):

23464

UNIPROT ID:

O75600

Full Name:

glycine C-acetyltransferase (2-amino-3-ketobutyrate coenzyme A ligase)

Calculated MW:

419 aa, 45 kDa

Observed MW:

45 kDa

Purification Method:

Antigen affinity purification

Recommended Dilutions:

WB 1:1000-1:4000

IHC 1:20-1:200

Applications

Tested Applications:

IHC, WB, ELISA

Cited Applications:

WB

Species Specificity:

human, mouse, rat

Cited Species:

mouse

Note-IHC: suggested antigen retrieval with TE buffer pH 9.0; (*) Alternatively, antigen retrieval may be performed with citrate buffer pH 6.0

Positive Controls:

WB : mouse pancreas tissue, rat pancreas tissue

IHC : human pancreas tissue,

Background Information

Notable Publications

Author	Pubmed ID	Journal	Application
Shengya Tian	31562192	Life Sci Alliance	WB

Storage

Storage:

Store at -20°C. Stable for one year after shipment.

Storage Buffer:

PBS with 0.02% sodium azide and 50% glycerol pH 7.3.

Aliquoting is unnecessary for -20°C storage

For technical support and original validation data for this product please contact:

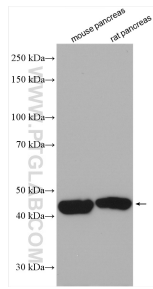
T: 4006900926

E: Proteintech-CN@ptglab.com

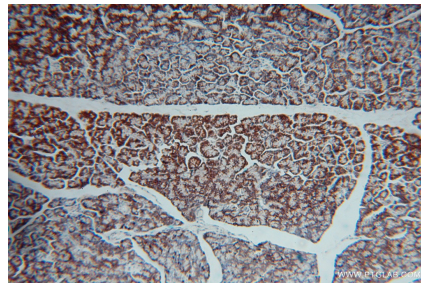
W: ptgcn.com

This product is exclusively available under Proteintech Group brand and is not available to purchase from any other manufacturer.

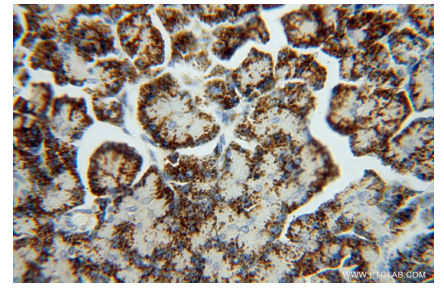
Selected Validation Data



Various lysates were subjected to SDS PAGE followed by western blot with 16317-1-AP (GCAT antibody) at dilution of 1:2000 incubated at room temperature for 1.5 hours.



Immunohistochemical analysis of paraffin-embedded human pancreas using 16317-1-AP (GCAT antibody) at dilution of 1:100 (under 10x lens).



Immunohistochemical analysis of paraffin-embedded human pancreas using 16317-1-AP (GCAT antibody) at dilution of 1:100 (under 40x lens).