

For Research Use Only

RAB30 Polyclonal antibody

Catalog Number: 16328-1-AP

1 Publications



Basic Information

Catalog Number:

16328-1-AP

Size:

500 µg/ml

Source:

Rabbit

Isotype:

IgG

Immunogen Catalog Number:

AG9444

GenBank Accession Number:

BC014213

GeneID (NCBI):

27314

UNIPROT ID:

Q15771

Full Name:

RAB30, member RAS oncogene family

Calculated MW:

203 aa, 23 kDa

Observed MW:

20-23 kDa

Purification Method:

Antigen affinity purification

Recommended Dilutions:

WB 1:200-1:1000

Applications

Tested Applications:

WB, ELISA

Cited Applications:

WB

Species Specificity:

human, rat

Cited Species:

rat

Positive Controls:

WB: HeLa cells, PC-12 cells

Background Information

Notable Publications

Author	Pubmed ID	Journal	Application
Wenjuan Zhang	39106917	Neurosci Lett	WB

Storage

Storage:

Store at -20°C. Stable for one year after shipment.

Storage Buffer:

PBS with 0.02% sodium azide and 50% glycerol pH 7.3.

Aliquoting is unnecessary for -20°C storage

For technical support and original validation data for this product please contact:

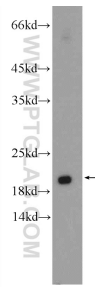
T: 4006900926

E: Proteintech-CN@ptglab.com

W: ptgcn.com

This product is exclusively available under Proteintech Group brand and is not available to purchase from any other manufacturer.

Selected Validation Data



HeLa cells were subjected to SDS PAGE followed by western blot with 16328-1-AP (RAB30 Antibody) at dilution of 1:300 incubated at room temperature for 1.5 hours.