

For Research Use Only

PSF3 Polyclonal antibody

Catalog Number: 16345-1-AP



Basic Information

Catalog Number:

16345-1-AP

Size:

200 µg/ml

Source:

Rabbit

Isotype:

IgG

Immunogen Catalog Number:

AG9534

GenBank Accession Number:

BC014437

GeneID (NCBI):

64785

UNIPROT ID:

Q9BRX5

Full Name:

GINS complex subunit 3 (Psf3

homolog)

Calculated MW:

216 aa, 25 kDa

Observed MW:

25-30 kDa

Purification Method:

Antigen affinity purification

Recommended Dilutions:

WB 1:500-1:1000

IF 1:20-1:200

Applications

Tested Applications:

IF/ICC, WB, ELISA

Species Specificity:

human, mouse, rat

Positive Controls:

WB : MCF7 cells, HeLa cells

IF : HeLa cells,

Background Information

Storage

Storage:

Store at -20°C. Stable for one year after shipment.

Storage Buffer:

PBS with 0.02% sodium azide and 50% glycerol pH 7.3.

Aliquoting is unnecessary for -20°C storage

For technical support and original validation data for this product please contact:

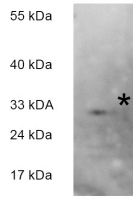
T: 4006900926

E: Proteintech-CN@ptglab.com

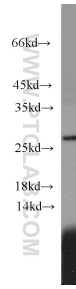
W: ptgcn.com

This product is exclusively available under Proteintech Group brand and is not available to purchase from any other manufacturer.

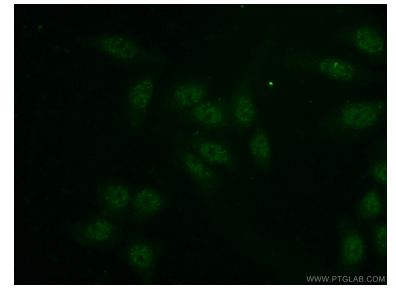
Selected Validation Data



WB result from Andre Franz in HeLa cell of 16345-1-AP (anti-GINS3).



MCF7 cells were subjected to SDS PAGE followed by western blot with 16345-1-AP (GINS3 antibody) at dilution of 1:1000 incubated at room temperature for 1.5 hours.



Immunofluorescent analysis of (-20°C Ethanol) fixed HeLa cells using 16345-1-AP (GINS3 antibody) at dilution of 1:50 and Alexa Fluor 488-conjugated AffiniPure Goat Anti-Rabbit IgG(H+L).