

For Research Use Only

# GTPBP9 Polyclonal antibody

Catalog Number: 16371-1-AP

Featured Product

6 Publications



## Basic Information

**Catalog Number:**

16371-1-AP

**Size:**

200 µg/ml

**Source:**

Rabbit

**Isotype:**

IgG

**Immunogen Catalog Number:**

AG9283

**GenBank Accession Number:**

BC013925

**GeneID (NCBI):**

29789

**UNIPROT ID:**

Q9NTK5

**Full Name:**

Obg-like ATPase 1

**Calculated MW:**

396aa, 45 kDa; 278aa, 31 kDa

**Observed MW:**

45 kDa

**Purification Method:**

Antigen affinity purification

**Recommended Dilutions:**

WB 1:500-1:1000

IHC 1:50-1:500

IF/ICC 1:50-1:500

## Applications

**Tested Applications:**

WB, IHC, IF/ICC, ELISA

**Cited Applications:**

WB, IF

**Species Specificity:**

human

**Cited Species:**

human, mouse

**Note-IHC: suggested antigen retrieval with TE buffer pH 9.0; (\*) Alternatively, antigen retrieval may be performed with citrate buffer pH 6.0**

**Positive Controls:**

WB : Jurkat cells, HepG2 cells, MCF-7 cells

IHC : human liver cancer tissue, human colon cancer tissue

IF/ICC : MCF-7 cells,

## Background Information

### Notable Publications

Author	Pubmed ID	Journal	Application
Gayathri Narasimhan	31063653	Clin Exp Pharmacol Physiol	WB
Zhi-Ping Fu	39381749	iScience	WB
Praveen K Dubey	38889130	PLoS One	WB

## Storage

**Storage:**

Store at -20°C. Stable for one year after shipment.

**Storage Buffer:**

PBS with 0.02% sodium azide and 50% glycerol pH 7.3.

Aliquoting is unnecessary for -20°C storage

For technical support and original validation data for this product please contact:

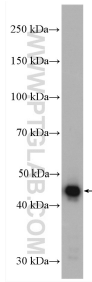
T: 4006900926

E: Proteintech-CN@ptglab.com

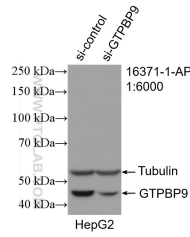
W: ptgcn.com

**This product is exclusively available under Proteintech Group brand and is not available to purchase from any other manufacturer.**

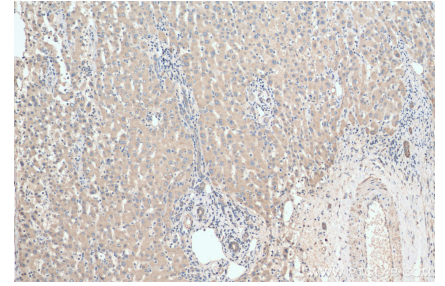
## Selected Validation Data



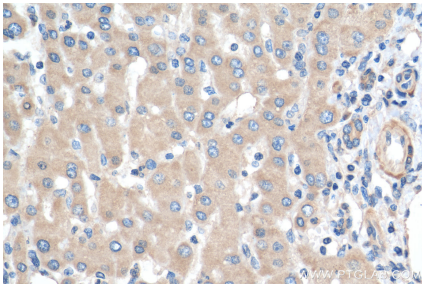
Jurkat cells were subjected to SDS PAGE followed by western blot with 16371-1-AP (GTPBP9 antibody) at dilution of 1:6000 incubated at room temperature for 1.5 hours.



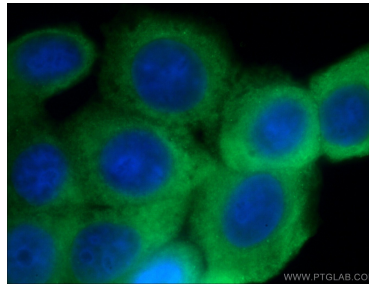
WB result of GTPBP9 antibody (16371-1-AP; 1:6000; incubated at room temperature for 1.5 hours) with sh-Control and sh-GTPBP9 transfected HepG2 cells.



Immunohistochemical analysis of paraffin-embedded human liver cancer tissue slide using 16371-1-AP (GTPBP9 antibody) at dilution of 1:200 (under 10x lens). Heat mediated antigen retrieval with Tris-EDTA buffer (pH 9.0).



Immunohistochemical analysis of paraffin-embedded human liver cancer tissue slide using 16371-1-AP (GTPBP9 antibody) at dilution of 1:200 (under 40x lens). Heat mediated antigen retrieval with Tris-EDTA buffer (pH 9.0).



Immunofluorescent analysis of (-20°C Ethanol) fixed MCF-7 cells using 16371-1-AP (GTPBP9 antibody) at dilution of 1:200 and Alexa Fluor 488-Conjugated Goat Anti-Rabbit IgG(H+L).