

For Research Use Only

ENO3 Polyclonal antibody

Catalog Number: 16421-1-AP **3 Publications**



Basic Information

Catalog Number: 16421-1-AP	GenBank Accession Number: BC017249	Purification Method: Antigen affinity purification
Size: 400 µg/ml	GeneID (NCBI): 2027	Recommended Dilutions: WB 1:500-1:3000 IF/ICC 1:50-1:500
Source: Rabbit	UNIPROT ID: P13929	
Isotype: IgG	Full Name: enolase 3 (beta, muscle)	
Immunogen Catalog Number: AG9613	Calculated MW: 434 aa, 47 kDa	
	Observed MW: 47 kDa	

Applications

Tested Applications: WB, IF/ICC, ELISA	Positive Controls: WB : human skeletal muscle tissue, human brain tissue IF/ICC : HeLa cells,
Cited Applications: WB	
Species Specificity: human, mouse	
Cited Species: human, mouse, rat	

Background Information

ENO3, also named as MSE, belongs to the enolase family. It appears to have a function in striated muscle development and regeneration. Defects in ENO3 are the cause of glycogen storage disease type 13 (GSD13).

Notable Publications

Author	Pubmed ID	Journal	Application
Deanna L Plubell	28325852	Mol Cell Proteomics	WB
Choi Minji M	23548559	Cell Physiol Biochem	WB
Zhilong Zheng	37211156	Biochim Biophys Acta Mol Cell Res	WB

Storage

Storage:
Store at -20°C. Stable for one year after shipment.
Storage Buffer:
PBS with 0.02% sodium azide and 50% glycerol pH 7.3.
Aliquoting is unnecessary for -20°C storage

For technical support and original validation data for this product please contact:

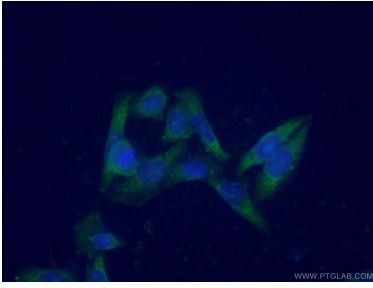
T: 4006900926

E: Proteintech-CN@ptglab.com

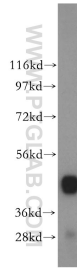
W: ptgcn.com

This product is exclusively available under Proteintech Group brand and is not available to purchase from any other manufacturer.

Selected Validation Data



Immunofluorescent analysis of (-20°C Ethanol) fixed HeLa cells using 16421-1-AP (ENO3 antibody) at dilution of 1:50 and Alexa Fluor 488-conjugated AffiniPure Goat Anti-Rabbit IgG(H+L).



human skeletal muscle tissue were subjected to SDS PAGE followed by western blot with 16421-1-AP (ENO3 antibody) at dilution of 1:500 incubated at room temperature for 1.5 hours.