

For Research Use Only

SRI Polyclonal antibody

Catalog Number: 16471-1-AP **5 Publications**



Basic Information

Catalog Number:

16471-1-AP

Size:

700 µg/ml

Source:

Rabbit

Isotype:

IgG

Immunogen Catalog Number:

AG9553

GenBank Accession Number:

BC011025

GeneID (NCBI):

6717

UNIPROT ID:

P30626

Full Name:

sorcin

Calculated MW:

198 aa, 22 kDa

Observed MW:

22 kDa

Purification Method:

Antigen affinity purification

Recommended Dilutions:

WB 1:500-1:1000

IP 0.5-4.0 µg for 1.0-3.0 mg of total protein lysate

IHC 1:250-1:1000

IF/ICC 1:50-1:500

Applications

Tested Applications:

WB, IP, IF/ICC, IHC, ELISA

Cited Applications:

WB, IP, IF, IHC

Species Specificity:

human, mouse, rat

Cited Species:

human, mouse

Note-IHC: suggested antigen retrieval with TE buffer pH 9.0; (*) Alternatively, antigen retrieval may be performed with citrate buffer pH 6.0

Positive Controls:

WB : mouse liver tissue, HepG2 cells, human liver tissue, rat liver tissue

IP : HepG2 cells,

IHC : human liver tissue,

IF/ICC : HepG2 cells,

Background Information

Notable Publications

Author	Pubmed ID	Journal	Application
Fei Ling	34716295	Cell Death Dis	WB,IHC,IF,IP
Dan Wang	33675811	Arch Biochem Biophys	IF, WB
Yaoting Sun	28681913	J Cell Physiol	WB

Storage

Storage:

Store at -20°C. Stable for one year after shipment.

Storage Buffer:

PBS with 0.02% sodium azide and 50% glycerol pH 7.3.

Aliquoting is unnecessary for -20°C storage

For technical support and original validation data for this product please contact:

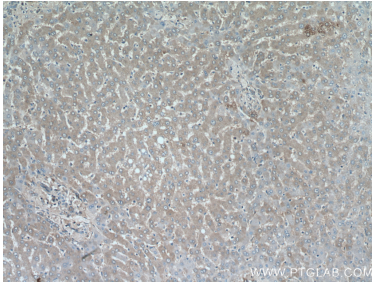
T: 4006900926

E: Proteintech-CN@ptglab.com

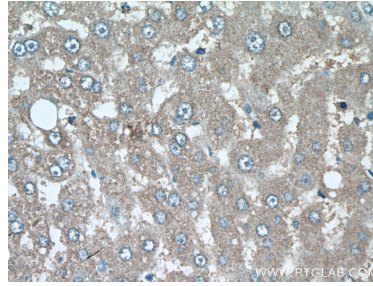
W: ptgcn.com

This product is exclusively available under Proteintech Group brand and is not available to purchase from any other manufacturer.

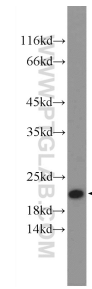
Selected Validation Data



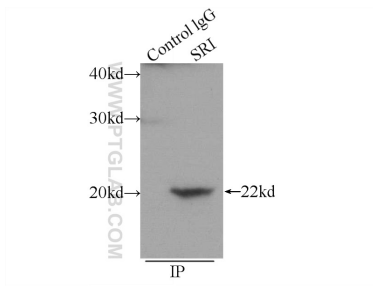
Immunohistochemical analysis of paraffin-embedded human liver tissue slide using 16471-1-AP (SRI antibody) at dilution of 1:500 (under 10x lens).



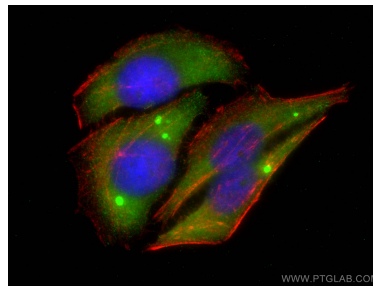
Immunohistochemical analysis of paraffin-embedded human liver tissue slide using 16471-1-AP (SRI antibody) at dilution of 1:500 (under 40x lens).



mouse liver tissue were subjected to SDS PAGE followed by western blot with 16471-1-AP (SRI Antibody) at dilution of 1:600 incubated at room temperature for 1.5 hours.



IP result of anti-SRI (IP:16471-1-AP, 3ug; Detection:16471-1-AP 1:500) with HepG2 cells lysate 600ug.



Immunofluorescent analysis of (-20°C Ethanol) fixed HepG2 cells using SRI antibody (16471-1-AP) at dilution of 1:200 and CoraLite®488-Conjugated AffiniPure Goat Anti-Rabbit IgG(H+L), CL594-phalloidin (red).