

For Research Use Only

# BTN2A2 Polyclonal antibody

Catalog Number: 16482-1-AP



## Basic Information

<b>Catalog Number:</b> 16482-1-AP	<b>GenBank Accession Number:</b> BC014021	<b>Purification Method:</b> Antigen affinity purification
<b>Size:</b> 500 µg/ml	<b>GeneID (NCBI):</b> 10385	<b>Recommended Dilutions:</b> WB 1:500-1:1000 IF/ICC 1:200-1:800
<b>Source:</b> Rabbit	<b>UNIPROT ID:</b> Q8WVV5	
<b>Isotype:</b> IgG	<b>Full Name:</b> butyrophilin, subfamily 2, member A2	
<b>Immunogen Catalog Number:</b> AG9603	<b>Calculated MW:</b> 523 aa, 59 kDa	
	<b>Observed MW:</b> 59 kDa	

## Applications

<b>Tested Applications:</b> WB, IF/ICC, ELISA	<b>Positive Controls:</b>
<b>Species Specificity:</b> human, mouse, rat	<b>WB :</b> MCF7 cells, NIH/3T3 cells, MCF-7 cells, human testis tissue
	<b>IF/ICC :</b> HepG2 cells,

## Background Information

Butyrophilins constitute a family of transmembrane proteins consisting of butyrophilin (BTN), BTN-like (BTNL), and selection and upkeep of intraepithelial T cell (SKI NT) proteins. It has been reported that BTN2A2 is expressed on B cells, DCs, and macrophages and the expression levels are upregulated upon activation. BTN2A2 is also expressed on thymic epithelial cells (TECs). The BTN2A2 putative receptor is expressed on activated T cells. BTN2A2 protein inhibits T cell proliferation, metabolism and Th1 cytokine production (PMID: 34588505). The calculated MW of BTN2A2 is 59kDa, and the glycosylated form is around 65kDa (PMID:20208008).

## Storage

**Storage:**  
Store at -20°C. Stable for one year after shipment.  
**Storage Buffer:**  
PBS with 0.02% sodium azide and 50% glycerol pH 7.3.  
Aliquoting is unnecessary for -20°C storage

For technical support and original validation data for this product please contact:

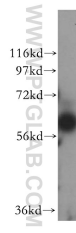
T: 4006900926

E: [Proteintech-CN@ptglab.com](mailto:Proteintech-CN@ptglab.com)

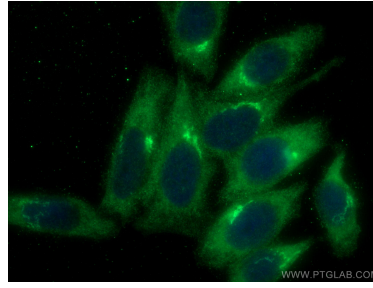
W: [ptgcn.com](http://ptgcn.com)

**This product is exclusively available under Proteintech Group brand and is not available to purchase from any other manufacturer.**

## Selected Validation Data



MCF7 cells were subjected to SDS PAGE followed by western blot with 16482-1-AP (BTN2A2 antibody) at dilution of 1:500 incubated at room temperature for 1.5 hours.



Immunofluorescent analysis of (-20°C Ethanol) fixed HepG2 cells using BTN2A2 antibody (16482-1-AP) at dilution of 1:400 and CoraLite® 488-Conjugated AffiniPure Goat Anti-Rabbit IgG(H+L).