

For Research Use Only

GDPD5 Polyclonal antibody

Catalog Number: 16494-1-AP



Basic Information

Catalog Number:

16494-1-AP

Size:

240 µg/ml

Source:

Rabbit

Isotype:

IgG

Immunogen Catalog Number:

AG9622

GenBank Accession Number:

BC020203

GeneID (NCBI):

81544

UNIPROT ID:

Q8WTR4

Full Name:

glycerophosphodiester phosphodiesterase domain containing 5

Calculated MW:

127 aa, 13 kDa

Observed MW:

52 kDa

Purification Method:

Antigen affinity purification

Recommended Dilutions:

IP 0.5-4.0 µg for 1.0-3.0 mg of total protein lysate
IHC 1:20-1:200

Applications

Tested Applications:

IHC, IP, ELISA

Species Specificity:

human, mouse, rat

Note-IHC: suggested antigen retrieval with TE buffer pH 9.0; (*) Alternatively, antigen retrieval may be performed with citrate buffer pH 6.0

Positive Controls:

IP : mouse skeletal muscle tissue,

IHC : human spleen tissue, human kidney tissue, human ovary tissue, human placenta tissue

Background Information

GDPD5 (Glycerophosphodiester phosphodiesterase domain-containing protein 5) is also named as GDE2 and belongs to the glycerophosphoryl diester phosphodiesterase family. The deduced sequence of GDE2 contains 607 amino acids with seven putative transmembrane regions. GDPD5 is a glycerophosphocholine phosphodiesterase that osmotically regulates the osmoprotective organic osmolyte GPC (PMID:18667693). It has 5 isoforms produced by alternative splicing.

Storage

Storage:

Store at -20°C. Stable for one year after shipment.

Storage Buffer:

PBS with 0.02% sodium azide and 50% glycerol pH 7.3.

Aliquoting is unnecessary for -20°C storage

For technical support and original validation data for this product please contact:

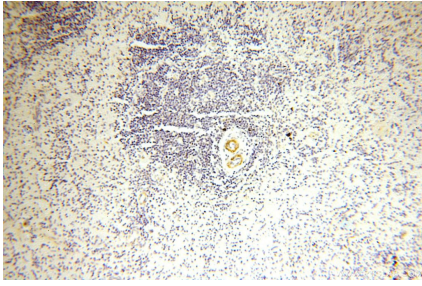
T: 4006900926

E: Proteintech-CN@ptglab.com

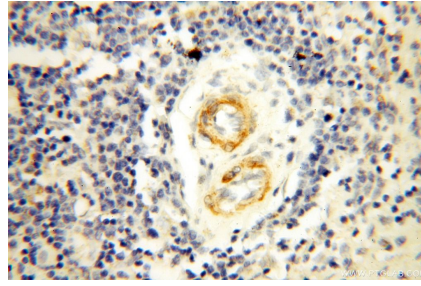
W: ptgcn.com

This product is exclusively available under Proteintech Group brand and is not available to purchase from any other manufacturer.

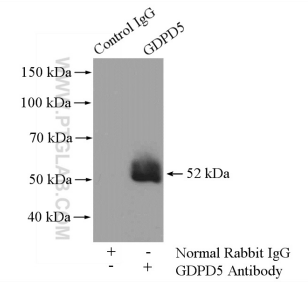
Selected Validation Data



Immunohistochemical analysis of paraffin-embedded human spleen using 16494-1-AP (GDPD5 antibody) at dilution of 1:50 (under 10x lens).



Immunohistochemical analysis of paraffin-embedded human spleen using 16494-1-AP (GDPD5 antibody) at dilution of 1:50 (under 40x lens).



IP result of anti-GDPD5 (IP:16494-1-AP, 4ug; Detection:16494-1-AP 1:500) with mouse skeletal muscle tissue lysate 3600ug.