

For Research Use Only

MCEE Polyclonal antibody

Catalog Number: 16499-1-AP **2 Publications**



Basic Information

Catalog Number:

16499-1-AP

Size:

450 µg/ml

Source:

Rabbit

Isotype:

IgG

Immunogen Catalog Number:

AG9665

GenBank Accession Number:

BC020825

GeneID (NCBI):

84693

UNIPROT ID:

Q96PE7

Full Name:

methylmalonyl CoA epimerase

Calculated MW:

176 aa, 19 kDa

Observed MW:

15-19 kDa

Purification Method:

Antigen affinity purification

Recommended Dilutions:

WB 1:500-1:2000

IF/ICC 1:50-1:500

Applications

Tested Applications:

WB, IF/ICC, ELISA

Cited Applications:

WB

Species Specificity:

human, mouse, rat

Cited Species:

human

Positive Controls:

WB : mouse liver tissue, human heart tissue, human liver tissue, rat liver tissue

IF/ICC : HepG2 cells,

Background Information

Notable Publications

Author	Pubmed ID	Journal	Application
Ana P Gomes	35361954	Nat Metab	WB
Lan Wang	37979225	Biochim Biophys Acta Mol Basis Dis	WB

Storage

Storage:

Store at -20°C. Stable for one year after shipment.

Storage Buffer:

PBS with 0.02% sodium azide and 50% glycerol pH 7.3.

Aliquoting is unnecessary for -20°C storage

For technical support and original validation data for this product please contact:

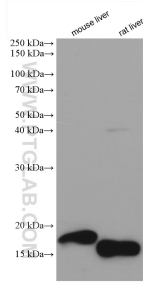
T: 4006900926

E: Proteintech-CN@ptglab.com

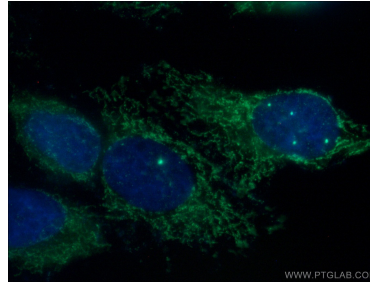
W: ptgcn.com

This product is exclusively available under Proteintech Group brand and is not available to purchase from any other manufacturer.

Selected Validation Data



Various lysates were subjected to SDS PAGE followed by western blot with 16499-1-AP (MCEE antibody) at dilution of 1:1000 incubated at room temperature for 1.5 hours.



Immunofluorescent analysis of (4% PFA) fixed HepG2 cells using 16499-1-AP (MCEE antibody) at dilution of 1:50 and Alexa Fluor 488-conjugated AffiniPure Goat Anti-Rabbit IgG(H+L).