

For Research Use Only

SDCCAG10 Polyclonal antibody

Catalog Number: 16502-1-AP



Basic Information

Catalog Number:

16502-1-AP

Size:

600 µg/ml

Source:

Rabbit

Isotype:

IgG

Immunogen Catalog Number:

AG9671

GenBank Accession Number:

BC012117

GeneID (NCBI):

10283

UNIPROT ID:

Q6UX04

Full Name:

serologically defined colon cancer antigen 10

Calculated MW:

472aa, 54 kDa; 291aa, 33 kDa

Observed MW:

54 kDa

Purification Method:

Antigen affinity purification

Recommended Dilutions:

WB 1:500-1:2000

IP 0.5-4.0 µg for 1.0-3.0 mg of total protein lysate

IF/ICC 1:20-1:200

Applications

Tested Applications:

WB, IF/ICC, IP, ELISA

Species Specificity:

human, mouse, rat

Positive Controls:

WB : HepG2 cells, HeLa cells, human colon tissue

IP : HepG2 cells,

IF/ICC : HepG2 cells,

Background Information

Storage

Storage:

Store at -20°C. Stable for one year after shipment.

Storage Buffer:

PBS with 0.02% sodium azide and 50% glycerol pH 7.3.

Aliquoting is unnecessary for -20°C storage

For technical support and original validation data for this product please contact:

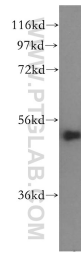
T: 4006900926

E: Proteintech-CN@ptglab.com

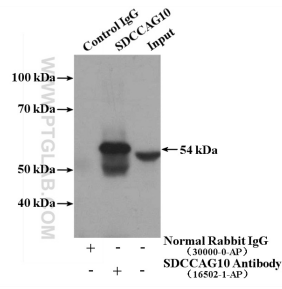
W: ptgcn.com

This product is exclusively available under Proteintech Group brand and is not available to purchase from any other manufacturer.

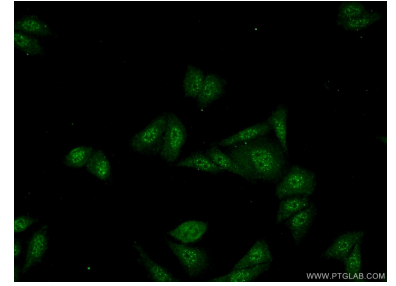
Selected Validation Data



HepG2 cells were subjected to SDS PAGE followed by western blot with 16502-1-AP (SDCCAG10 antibody) at dilution of 1:500 incubated at room temperature for 1.5 hours.



IP result of anti-SDCCAG10 (IP:16502-1-AP, 4ug; Detection:16502-1-AP 1:500) with HepG2 cells lysate 2400ug.



Immunofluorescent analysis of (-20°C Ethanol) fixed HepG2 cells using 16502-1-AP (SDCCAG10 antibody) at dilution of 1:50 and Alexa Fluor 488-conjugated AffiniPure Goat Anti-Rabbit IgG(H+L).