

For Research Use Only

# GLIPR2 Polyclonal antibody

Catalog Number:16508-1-AP



## Basic Information

<b>Catalog Number:</b> 16508-1-AP	<b>GenBank Accession Number:</b> BC017918	<b>Purification Method:</b> Antigen affinity purification
<b>Size:</b> 350 ug/ml	<b>GeneID (NCBI):</b> 152007	<b>Recommended Dilutions:</b> WB 1:500-1:1000 IHC 1:50-1:500
<b>Source:</b> Rabbit	<b>UNIPROT ID:</b> Q9H4G4	
<b>Isotype:</b> IgG	<b>Full Name:</b> GLI pathogenesis-related 2	
<b>Immunogen Catalog Number:</b> AG9725	<b>Calculated MW:</b> 153aa,17 kDa; 90aa,10 kDa	
	<b>Observed MW:</b> 17 kDa	

## Applications

<b>Tested Applications:</b> WB, IHC, ELISA	<b>Positive Controls:</b> WB : human milk, IHC : human lung tissue,
<b>Species Specificity:</b> human	
<b>Note-IHC: suggested antigen retrieval with TE buffer pH 9.0; (*) Alternatively, antigen retrieval may be performed with citrate buffer pH 6.0</b>	

## Background Information

Golgi-associated plant pathogenesis-related protein 1 (GLIPR2, also known as C9orf19 and GAPR1) is a multifunctional protein with dual engagement in normal cellular processes and the intricacies of cancer biology. GLIPR2 has also been associated with a spectrum of cellular functions encompassing the regulation of autophagy (PMID: 12137952; 18824526). It has been reported that GLIPR2 is a newly identified negative regulator of autophagy that inhibits the class III phosphatidylinositol 3-kinase complex I (PtdIns3K-C1) complex activity (PMID: 3322586).

## Storage

**Storage:**  
Store at -20°C. Stable for one year after shipment.  
**Storage Buffer:**  
PBS with 0.02% sodium azide and 50% glycerol pH 7.3.  
Aliquoting is unnecessary for -20°C storage

For technical support and original validation data for this product please contact:

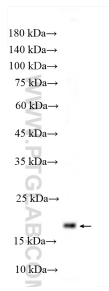
T: 4006900926

E: Proteintech-CN@ptglab.com

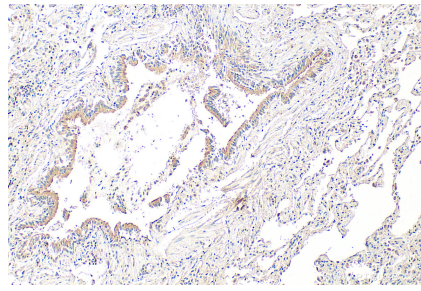
W: ptgcn.com

This product is exclusively available under Proteintech Group brand and is not available to purchase from any other manufacturer.

## Selected Validation Data



human milk were subjected to SDS PAGE followed by western blot with 16508-1-AP (GLIPR2 antibody) at dilution of 1:600 incubated at room temperature for 1.5 hours.



Immunohistochemical analysis of paraffin-embedded human lung tissue slide using 16508-1-AP (GLIPR2 antibody) at dilution of 1:200 (under 10x lens). Heat mediated antigen retrieval with Tris-EDTA buffer (pH 9.0).