

For Research Use Only

# RNASEH2C Polyclonal antibody

Catalog Number: 16518-1-AP **3 Publications**



## Basic Information

**Catalog Number:**

16518-1-AP

**Size:**

450 µg/ml

**Source:**

Rabbit

**Isotype:**

IgG

**Immunogen Catalog Number:**

AG9739

**GenBank Accession Number:**

BC023588

**GeneID (NCBI):**

84153

**UNIPROT ID:**

Q8TDP1

**Full Name:**

ribonuclease H2, subunit C

**Calculated MW:**

164 aa, 18 kDa

**Observed MW:**

22 kDa

**Purification Method:**

Antigen affinity purification

**Recommended Dilutions:**

WB 1:500-1:2000

IP 0.5-4.0 µg for 1.0-3.0 mg of total protein lysate

IHC 1:20-1:200

## Applications

**Tested Applications:**

IHC, IP, WB, ELISA

**Cited Applications:**

WB

**Species Specificity:**

human

**Cited Species:**

human

**Note-IHC: suggested antigen retrieval with TE buffer pH 9.0; (\*) Alternatively, antigen retrieval may be performed with citrate buffer pH 6.0**

**Positive Controls:**

**WB:** A549 cells, HEK-293 cells, human spleen tissue, human testis tissue, HeLa cells, Jurkat cells

**IP:** HEK-293 cells,

**IHC:** human brain tissue, human lung tissue, human skin tissue, human spleen tissue

## Background Information

### Notable Publications

Author	Pubmed ID	Journal	Application
Sara Pizzi	25274781	Hum Mol Genet	WB
Laura A Lindsey-Boltz	26491008	J Biol Chem	WB
Michal Zimmermann	29973717	Nature	WB

## Storage

**Storage:**

Store at -20°C. Stable for one year after shipment.

**Storage Buffer:**

PBS with 0.02% sodium azide and 50% glycerol pH 7.3.

Aliquoting is unnecessary for -20°C storage

For technical support and original validation data for this product please contact:

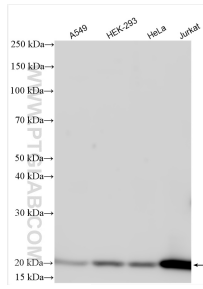
T: 4006900926

E: [Proteintech-CN@ptglab.com](mailto:Proteintech-CN@ptglab.com)

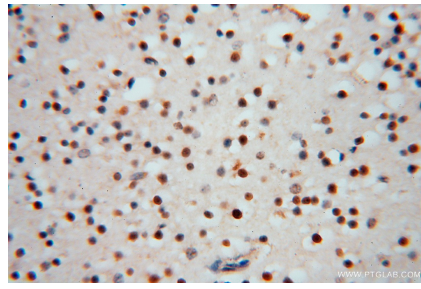
W: [ptgcn.com](http://ptgcn.com)

**This product is exclusively available under Proteintech Group brand and is not available to purchase from any other manufacturer.**

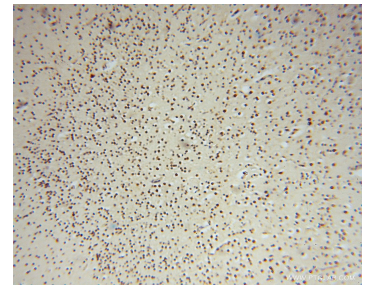
## Selected Validation Data



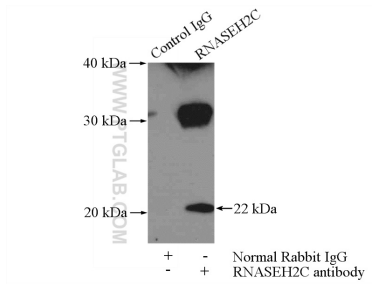
Various lysates were subjected to SDS PAGE followed by western blot with 16518-1-AP (RNASEH2C antibody) at dilution of 1:1000 incubated at room temperature for 1.5 hours.



Immunohistochemical analysis of paraffin-embedded human brain using 16518-1-AP (RNASEH2C antibody) at dilution of 1:50 (under 40x lens).



Immunohistochemical analysis of paraffin-embedded human brain using 16518-1-AP (RNASEH2C antibody) at dilution of 1:50 (under 10x lens).



IP result of anti-RNASEH2C (IP:16518-1-AP, 3ug; Detection:16518-1-AP 1:500) with HEK-293 cells lysate 3200ug.