

Desmin Polyclonal antibody

Catalog Number: 16520-1-AP

59 Publications

Basic Information

Catalog Number:

16520-1-AP

Size:

700 µg/ml

Source:

Rabbit

Isotype:

IgG

Immunogen Catalog Number:

AG9742

GenBank Accession Number:

BC032116

GeneID (NCBI):

1674

UNIPROT ID:

P17661

Full Name:

desmin

Calculated MW:

470 aa, 54 kDa

Observed MW:

52-53 kDa

Purification Method:

Antigen affinity purification

Recommended Dilutions:

WB 1:20000-1:100000

IP 0.5-4.0 µg for 1.0-3.0 mg of total protein lysate

IHC 1:500-1:2000

IF 1:200-1:800

Applications

Tested Applications:

FC, IF/ICC, IF-P, IHC, IP, WB, ELISA

Cited Applications:

IF, IHC, IP, WB

Species Specificity:

human, mouse, rat

Cited Species:

human, chicken, rat, mouse

Note-IHC: suggested antigen retrieval with TE buffer pH 9.0; (*) Alternatively, antigen retrieval may be performed with citrate buffer pH 6.0

Positive Controls:

WB : mouse heart tissue, human heart tissue, rat heart tissue

IP : mouse heart tissue,

IHC : human heart tissue, human appendix tissue, human skeletal muscle tissue, human placenta tissue, human colon tissue, human hystero myoma tissue

IF : C2C12 cells, mouse heart tissue, rat heart tissue

Background Information

Desmin is the main intermediate filament protein in skeletal and cardiac muscle cells and is essential for both the structural integrity and the survival of muscle cells. As an abundant muscle-specific protein, desmin has been widely used as a marker of muscle derived tumors. Anti-desmin is also valuable in the differential diagnosis of tumors of uncertain origin.

Notable Publications

Author	Pubmed ID	Journal	Application
Hejie Wang	36178582	In Vitro Cell Dev Biol Anim	WB
Shuai Yu	34616727	Front Cell Dev Biol	WB
Qing Ye	34734004	Ann Transl Med	IF

Storage

Storage:

Store at -20°C. Stable for one year after shipment.

Storage Buffer:

PBS with 0.02% sodium azide and 50% glycerol pH 7.3.

Aliquoting is unnecessary for -20°C storage

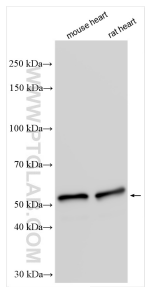
For technical support and original validation data for this product please contact:

T: 4006900926

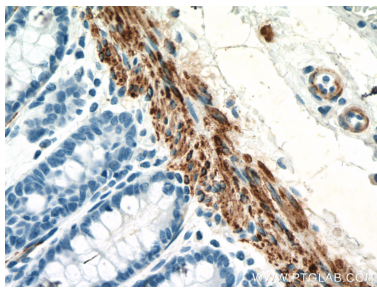
E: Proteintech-CN@ptglab.comW: ptgcn.com

This product is exclusively available under Proteintech Group brand and is not available to purchase from any other manufacturer.

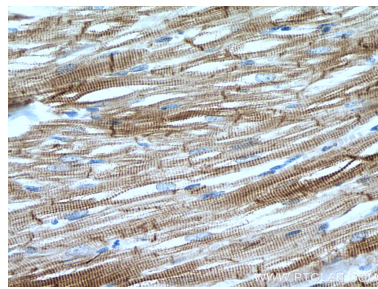
Selected Validation Data



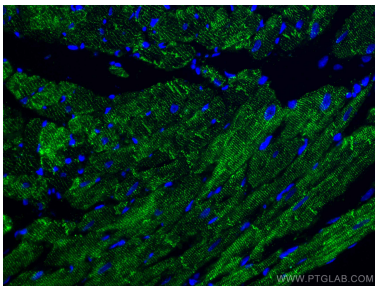
Various lysates were subjected to SDS PAGE followed by western blot with 16520-1-AP (Desmin antibody) at dilution of 1:80000 incubated at room temperature for 1.5 hours.



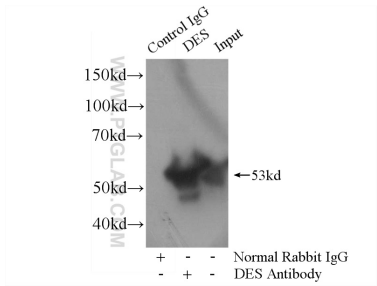
Immunohistochemical analysis of paraffin-embedded human colon tissue slide using 16520-1-AP (Desmin antibody) at dilution of 1:12800 (under 40x lens). Heat mediated antigen retrieval with Tris-EDTA buffer (pH 9.0).



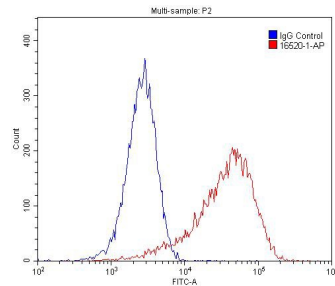
Immunohistochemical analysis of paraffin-embedded human heart tissue slide using 16520-1-AP (Desmin antibody) at dilution of 1:1000 (under 40x lens). Heat mediated antigen retrieval with Tris-EDTA buffer (pH 9.0).



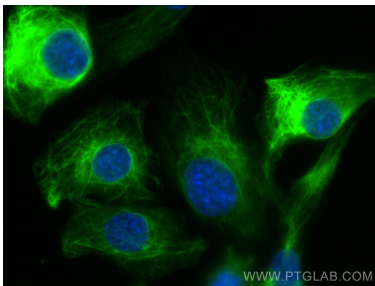
Immunofluorescent analysis of (4% PFA) fixed rat heart tissue using Desmin antibody (16520-1-AP) at dilution of 1:200 and CoraLite®488-Conjugated AffiniPure Goat Anti-Rabbit IgG(H+L).



IP result of anti-Desmin (IP:16520-1-AP, 4ug; Detection:16520-1-AP 1:3000) with mouse heart tissue lysate 8000ug.



1X10⁶ C2C12 cell were stained with 0.2ug Desmin antibody (16520-1-AP, red) and control antibody (blue). Alexa Fluor 488-conjugated AffiniPure Goat Anti-Rabbit IgG(H+L) with dilution 1:1500. Cells were fixed with 4% PFA and permeabilized with 0.1% Triton X-100.



Immunofluorescent analysis of (-20°C Methanol) fixed C2C12 cells using Desmin antibody (16520-1-AP) at dilution of 1:400 and CoraLite®488-Conjugated AffiniPure Goat Anti-Rabbit IgG(H+L).