

For Research Use Only

# SPG11 Polyclonal antibody

Catalog Number: 16555-1-AP

Featured Product

7 Publications



## Basic Information

**Catalog Number:**

16555-1-AP

**Size:**

300 µg/ml

**Source:**

Rabbit

**Isotype:**

IgG

**Immunogen Catalog Number:**

AG9769

**GenBank Accession Number:**

BC024161

**GeneID (NCBI):**

80208

**UNIPROT ID:**

Q96J17

**Full Name:**

spastic paraplegia 11 (autosomal recessive)

**Calculated MW:**

2443 aa, 279 kDa

**Purification Method:**

Antigen affinity purification

**Recommended Dilutions:**

IHC 1:50-1:500

## Applications

**Tested Applications:**

IHC, ELISA

**Cited Applications:**

WB, ColP

**Species Specificity:**

human, mouse, rat

**Cited Species:**

human, mouse

**Note-IHC: suggested antigen retrieval with TE buffer pH 9.0; (\*) Alternatively, antigen retrieval may be performed with citrate buffer pH 6.0**

**Positive Controls:**

IHC : human liver tissue,

## Background Information

### Notable Publications

Author	Pubmed ID	Journal	Application
Jaerak Chang	25365221	J Clin Invest	WB
Lara Marrone	35313342	Hum Mol Genet	WB
Benoît Renvoisé	24999486	Ann Clin Transl Neurol	WB

## Storage

**Storage:**

Store at -20°C. Stable for one year after shipment.

**Storage Buffer:**

PBS with 0.02% sodium azide and 50% glycerol pH 7.3.

Aliquoting is unnecessary for -20°C storage

For technical support and original validation data for this product please contact:

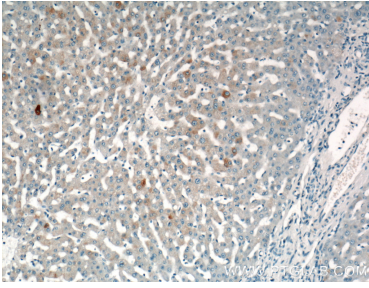
T: 4006900926

E: Proteintech-CN@ptglab.com

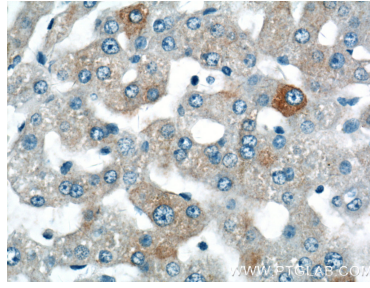
W: ptgcn.com

This product is exclusively available under Proteintech Group brand and is not available to purchase from any other manufacturer.

## Selected Validation Data



Immunohistochemical analysis of paraffin-embedded human liver tissue slide using 16555-1-AP (SPG11 Antibody) at dilution of 1:200 (under 10x lens).



Immunohistochemical analysis of paraffin-embedded human liver tissue slide using 16555-1-AP (SPG11 Antibody) at dilution of 1:200 (under 40x lens).