

For Research Use Only

NUPL2 Polyclonal antibody

Catalog Number: 16587-1-AP **1 Publications**



Basic Information

Catalog Number: 16587-1-AP	GenBank Accession Number: BC005327	Purification Method: Antigen affinity purification
Size: 500 µg/ml	GeneID (NCBI): 11097	Recommended Dilutions: WB 1:500-1:1000
Source: Rabbit	UNIPROT ID: O15504	
Isotype: IgG	Full Name: nucleoporin like 2	
Immunogen Catalog Number: AG8816	Calculated MW: 45 kDa	
	Observed MW: 45 kDa, 33-36 kDa	

Applications

Tested Applications: WB, ELISA	Positive Controls: WB : HEK-293 cells, human liver tissue, L02 cells
Cited Applications: WB	
Species Specificity: human, mouse, rat	
Cited Species: human	

Background Information

NUPL2 (also known as NLP-1, or hCG1) is an ubiquitous nuclear protein containing many phenylalanine-glycine (FG) repeats. As the functional orthologue of the budding yeast Nup42/Rip1 nucleoporin, NUPL2 is required for the export of mRNAs containing poly(A) tails from the nucleus into the cytoplasm (PMID: 10610322). In case of infection by HIV-1, it may participate in the docking of viral Vpr at the nuclear envelope (PMID: 16000379). NUPL2 localizes to the nuclear envelope and could also be mobile within the nucleus. It promotes CRM1-dependent nuclear protein export (PMID: 22250199).

Notable Publications

Author	Pubmed ID	Journal	Application
Maciej Kliszczak	37342232	Front Cell Dev Biol	WB

Storage

Storage:
Store at -20°C. Stable for one year after shipment.
Storage Buffer:
PBS with 0.02% sodium azide and 50% glycerol pH 7.3.
Aliquoting is unnecessary for -20°C storage

For technical support and original validation data for this product please contact:

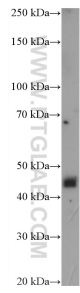
T: 4006900926

E: Proteintech-CN@ptglab.com

W: ptgcn.com

This product is exclusively available under Proteintech Group brand and is not available to purchase from any other manufacturer.

Selected Validation Data



HEK-293 cells were subjected to SDS PAGE followed by western blot with 16587-1-AP (NUPL2 antibody) at dilution of 1:600 incubated at room temperature for 1.5 hours.