

For Research Use Only

ME1 Polyclonal antibody

Catalog Number: 16619-1-AP

Featured Product

20 Publications



Basic Information

Catalog Number:

16619-1-AP

Size:

350 ug/ml

Source:

Rabbit

Isotype:

IgG

Immunogen Catalog Number:

AG9916

GenBank Accession Number:

BC025246

GeneID (NCBI):

4199

UNIPROT ID:

P48163

Full Name:

malic enzyme 1, NADP(+)-dependent, cytosolic

Calculated MW:

572 aa, 64 kDa

Observed MW:

55-64 kDa

Purification Method:

Antigen affinity purification

Recommended Dilutions:

WB 1:500-1:2000

IP 0.5-4.0 ug for 1.0-3.0 mg of total protein lysate

IHC 1:20-1:200

Applications

Tested Applications:

WB, IHC, IP, ELISA

Cited Applications:

WB, IHC, IF

Species Specificity:

human, mouse, rat

Cited Species:

human, mouse

Note-IHC: suggested antigen retrieval with TE buffer pH 9.0; (*) Alternatively, antigen retrieval may be performed with citrate buffer pH 6.0

Positive Controls:

WB : mouse liver tissue, HeLa cells, mouse placenta tissue, MCF-7 cells, rat liver tissue

IP : mouse liver tissue,

IHC : human liver tissue, human placenta tissue

Background Information

ME1(NADP-dependent malic enzyme) belongs to the malic enzymes family. This malic enzyme catalyzes the reversible oxidative decarboxylation of malate and is a link between the glycolytic pathway and the citric acid cycle. The reaction is L-malate plus NADP(+) to form pyruvate, CO(2), and NADPH. The predicted protein contains 572 amino acids and has a calculated molecular mass of 64.1 kDa.

Notable Publications

Author	Pubmed ID	Journal	Application
Lorenzo M Fernandes	30250042	Sci Rep	IHC, WB
Lei Ye	33491741	Int J Oncol	WB
Al-Dwairi Ahmed A	23056418	PLoS One	IHC

Storage

Storage:

Store at -20°C. Stable for one year after shipment.

Storage Buffer:

PBS with 0.02% sodium azide and 50% glycerol pH 7.3.

Aliquoting is unnecessary for -20°C storage

For technical support and original validation data for this product please contact:

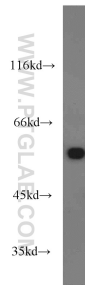
T: 4006900926

E: Proteintech-CN@ptglab.com

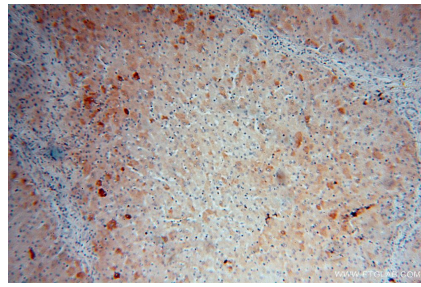
W: ptgcn.com

This product is exclusively available under Proteintech Group brand and is not available to purchase from any other manufacturer.

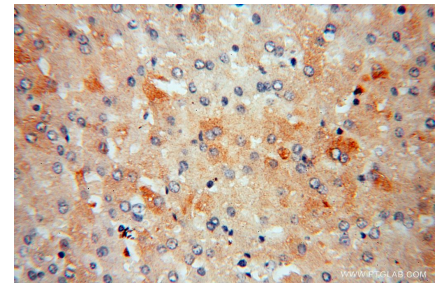
Selected Validation Data



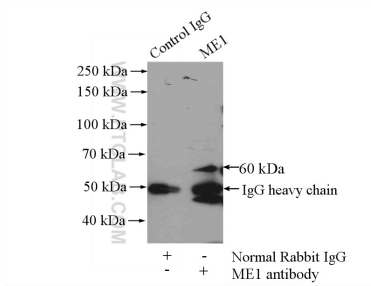
mouse liver tissue were subjected to SDS PAGE followed by western blot with 16619-1-AP (ME1 antibody) at dilution of 1:2000 incubated at room temperature for 1.5 hours.



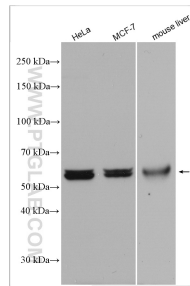
Immunohistochemical analysis of paraffin-embedded human liver using 16619-1-AP (ME1 antibody) at dilution of 1:100 (under 10x lens).



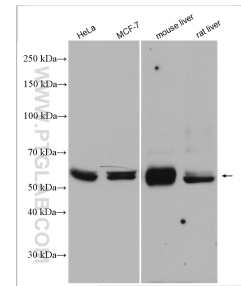
Immunohistochemical analysis of paraffin-embedded human liver using 16619-1-AP (ME1 antibody) at dilution of 1:100 (under 40x lens).



IP result of anti-ME1 (IP:16619-1-AP, 4ug; Detection:16619-1-AP 1:500) with mouse liver tissue lysate 4000ug.



Various lysates were subjected to SDS PAGE followed by western blot with 16619-1-AP (ME1 antibody) at dilution of 1:4000 incubated at room temperature for 1.5 hours.



Various lysates were subjected to SDS PAGE followed by western blot with 16619-1-AP (ME1 antibody) at dilution of 1:4000 incubated at room temperature for 1.5 hours.