

For Research Use Only

CCDC22 Polyclonal antibody

Catalog Number: 16636-1-AP

Featured Product

17 Publications



Basic Information

Catalog Number:

16636-1-AP

Size:

600 µg/ml

Source:

Rabbit

Isotype:

IgG

Immunogen Catalog Number:

AG9980

GenBank Accession Number:

BC000972

GeneID (NCBI):

28952

UNIPROT ID:

O60826

Full Name:

coiled-coil domain containing 22

Calculated MW:

71 kDa

Observed MW:

71 kDa

Purification Method:

Antigen affinity purification

Recommended Dilutions:

WB 1:500-1:2000

IP 0.5-4.0 µg for 1.0-3.0 mg of total protein lysate

Applications

Tested Applications:

IP, WB, ELISA

Cited Applications:

CoIP, IP, WB

Species Specificity:

human, mouse, rat

Cited Species:

human, mouse

Positive Controls:

WB : human brain tissue, mouse colon tissue, rat colon tissue, mouse lung tissue

IP : mouse lung tissue,

Background Information

Notable Publications

| Author | Pubmed ID | Journal | Application |
|------------------|-----------|---------------|-------------|
| Kerrie E McNally | 28892079 | Nat Cell Biol | WB |
| Dandan Qi | 26331702 | Mol Biosyst | WB |
| Michael D Healy | 36302387 | Structure | WB |

Storage

Storage:

Store at -20°C. Stable for one year after shipment.

Storage Buffer:

PBS with 0.02% sodium azide and 50% glycerol pH 7.3.

Aliquoting is unnecessary for -20°C storage

For technical support and original validation data for this product please contact:

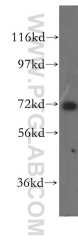
T: 4006900926

E: Proteintech-CN@ptglab.com

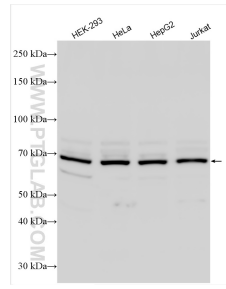
W: ptgcn.com

This product is exclusively available under Proteintech Group brand and is not available to purchase from any other manufacturer.

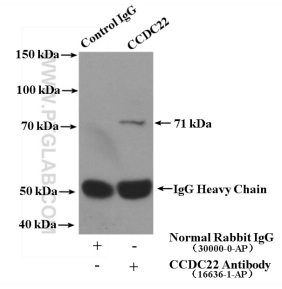
Selected Validation Data



human brain tissue were subjected to SDS PAGE followed by western blot with 16636-1-AP (CCDC22 antibody) at dilution of 1:500 incubated at room temperature for 1.5 hours.



Various lysates were subjected to SDS PAGE followed by western blot with 16636-1-AP (CCDC22 antibody) at dilution of 1:1500 incubated at room temperature for 1.5 hours.



IP result of anti-CCDC22 (IP:16636-1-AP, 4ug; Detection:16636-1-AP 1:600) with mouse lung tissue lysate 3600ug.