

For Research Use Only

# Haptoglobin Polyclonal antibody

Catalog Number: 16665-1-AP **10 Publications**



## Basic Information

<b>Catalog Number:</b> 16665-1-AP	<b>GenBank Accession Number:</b> BC058031	<b>Purification Method:</b> Antigen affinity purification
<b>Size:</b> 350 ug/ml	<b>GeneID (NCBI):</b> 3240	<b>Recommended Dilutions:</b> WB 1:2000-1:16000
<b>Source:</b> Rabbit	<b>UNIPROT ID:</b> P00738	IP 0.5-4.0 ug for 1.0-3.0 mg of total protein lysate
<b>Isotype:</b> IgG	<b>Full Name:</b> haptoglobin	IHC 1:50-1:500
<b>Immunogen Catalog Number:</b> AG10143	<b>Calculated MW:</b> 281aa,31 kDa; 228aa,25 kDa	
	<b>Observed MW:</b> 42 kDa	

## Applications

<b>Tested Applications:</b> WB, IHC, IP, ELISA	<b>Positive Controls:</b>
<b>Cited Applications:</b> WB, IHC, IF	WB : mouse serum, HEK-293 cells, human liver tissue, human plasma, rat plasma
<b>Species Specificity:</b> human, mouse, rat	IP : HepG2 cells,
<b>Cited Species:</b> human, mouse	IHC : human liver cancer tissue, human lung cancer tissue
<b>Note-IHC: suggested antigen retrieval with TE buffer pH 9.0; (*) Alternatively, antigen retrieval may be performed with citrate buffer pH 6.0</b>	

## Background Information

HP(Haptoglobin) is also named as zonulin and belongs to the peptidase S1 family. HP, a plasma glycoprotein that binds free hemoglobin, has a tetrameric structure of 2 alpha(16 kDa and 9 kDa) and 2 beta(40 kDa) polypeptides that are covalently associated by disulfide bonds. In most species, apart from ruminants, Hp has a molecular mass of 100 kDa, consisting of two subunits of 40 kDa and two subunits of 9 kDa, although in a few species, such as man, genetic variant of Hp forms polymers of higher mass(PMID:2361363). Recent studies of haptoglobin show that certain oligosaccharide structures predominate in different diseases. For example, a highly-fucosylated structure is found in breast cancer and ovarian cancer, highly-sialylated structures in Crohn's disease and highly branched structures in alcoholic liver disease and fucosylated haptoglobin is a good serum marker for pancreatic cancer.(PMID:16385567).

## Notable Publications

Author	Pubmed ID	Journal	Application
Hua Shen	25801896	Circ Res	WB
John D Belcher	26914345	Antioxid Redox Signal	
Ting Xue	27162549	Theranostics	WB

## Storage

**Storage:**  
Store at -20°C. Stable for one year after shipment.  
**Storage Buffer:**  
PBS with 0.02% sodium azide and 50% glycerol pH 7.3.  
Aliquoting is unnecessary for -20°C storage

For technical support and original validation data for this product please contact:

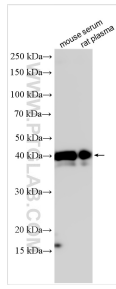
T: 4006900926

E: Proteintech-CN@ptglab.com

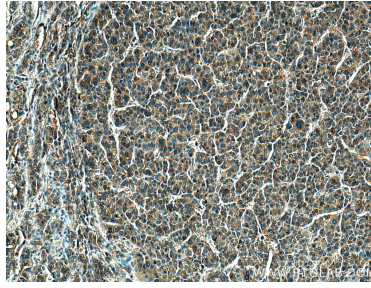
W: ptgcn.com

**This product is exclusively available under Proteintech Group brand and is not available to purchase from any other manufacturer.**

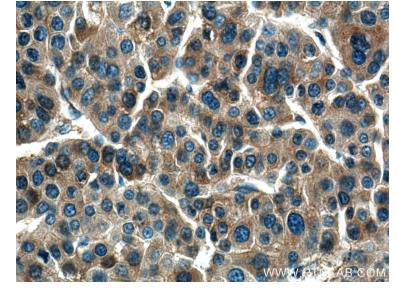
## Selected Validation Data



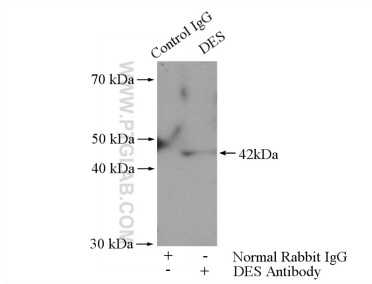
Various lysates were subjected to SDS PAGE followed by western blot with 16665-1-AP (Haptoglobin antibody) at dilution of 1:8000 incubated at room temperature for 1.5 hours.



Immunohistochemical analysis of paraffin-embedded human liver cancer tissue slide using 16665-1-AP (Haptoglobin antibody) at dilution of 1:200 (under 10x lens). Heat mediated antigen retrieval with Tris-EDTA buffer (pH 9.0).



Immunohistochemical analysis of paraffin-embedded human liver cancer tissue slide using 16665-1-AP (Haptoglobin antibody) at dilution of 1:200 (under 40x lens). Heat mediated antigen retrieval with Tris-EDTA buffer (pH 9.0).



IP result of anti-Haptoglobin (IP:16665-1-AP, 4ug; Detection:16665-1-AP 1:500) with HepG2 cells lysate 2000ug.