

For Research Use Only

# RPL7L1 Polyclonal antibody

Catalog Number: 16707-1-AP **3 Publications**



## Basic Information

**Catalog Number:**

16707-1-AP

**Size:**

450 µg/ml

**Source:**

Rabbit

**Isotype:**

IgG

**Immunogen Catalog Number:**

AG10106

**GenBank Accession Number:**

BC058020

**GeneID (NCBI):**

285855

**UNIPROT ID:**

Q6DK11

**Full Name:**

ribosomal protein L7-like 1

**Calculated MW:**

246 aa, 29 kDa

**Observed MW:**

29 kDa

**Purification Method:**

Antigen affinity purification

**Recommended Dilutions:**

WB 1:2000-1:16000

IP 0.5-4.0 µg for 1.0-3.0 mg of total protein lysate

IHC 1:20-1:200

IF/ICC 1:10-1:100

## Applications

**Tested Applications:**

WB, IHC, IF/ICC, IP, ELISA

**Cited Applications:**

WB

**Species Specificity:**

human, mouse, rat

**Cited Species:**

human, mouse

**Note-IHC: suggested antigen retrieval with TE buffer pH 9.0; (\*) Alternatively, antigen retrieval may be performed with citrate buffer pH 6.0**

**Positive Controls:**

**WB:** HEK-293T cells, HeLa cells, HepG2 cells, MCF-7 cells

**IP:** HepG2 cells,

**IHC:** human liver cancer tissue,

**IF/ICC:** MCF-7 cells,

## Background Information

### Notable Publications

Author	Pubmed ID	Journal	Application
Olga Gourdomichali	35205152	Biology (Basel)	WB
Mio Iwasaki	35573189	iScience	WB
Maserati Marc M	23211737	Zygote	

## Storage

**Storage:**

Store at -20°C. Stable for one year after shipment.

**Storage Buffer:**

PBS with 0.02% sodium azide and 50% glycerol pH 7.3.

Aliquoting is unnecessary for -20°C storage

For technical support and original validation data for this product please contact:

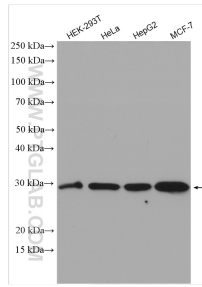
T: 4006900926

E: [Proteintech-CN@ptglab.com](mailto:Proteintech-CN@ptglab.com)

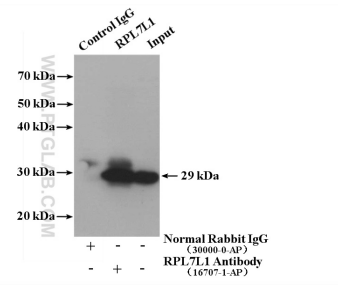
W: [ptgcn.com](http://ptgcn.com)

**This product is exclusively available under Proteintech Group brand and is not available to purchase from any other manufacturer.**

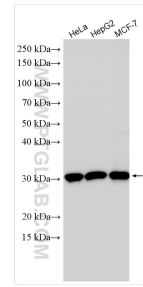
## Selected Validation Data



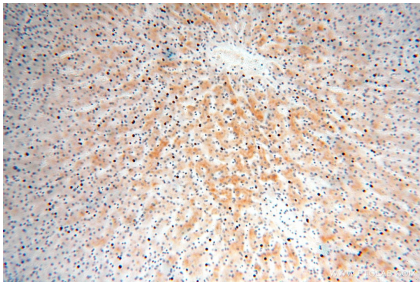
Various lysates were subjected to SDS PAGE followed by western blot with 16707-1-AP (RPL7L1 antibody) at dilution of 1:8000 incubated at room temperature for 1.5 hours.



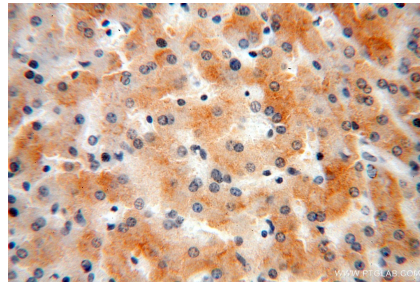
IP result of anti-RPL7L1 (IP:16707-1-AP, 4ug; Detection:16707-1-AP 1:1000) with HepG2 cells lysate 2240 ug.



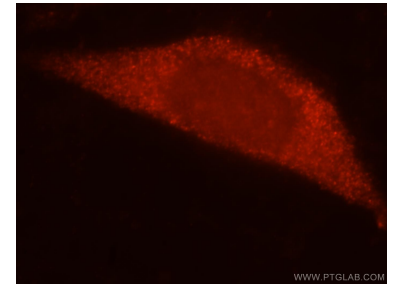
Various lysates were subjected to SDS PAGE followed by western blot with 16707-1-AP (RPL7L1 antibody) at dilution of 1:10000 incubated at room temperature for 1.5 hours.



Immunohistochemical analysis of paraffin-embedded human liver cancer using 16707-1-AP (RPL7L1 antibody) at dilution of 1:200 (under 10x lens).



Immunohistochemical analysis of paraffin-embedded human liver cancer using 16707-1-AP (RPL7L1 antibody) at dilution of 1:200 (under 40x lens).



Immunofluorescent analysis of MCF-7 cells, using RPL7L1 antibody 16707-1-AP at 1:25 dilution and Rhodamine-labeled goat anti-rabbit IgG (red).