

For Research Use Only

NPL Polyclonal antibody

Catalog Number:16715-1-AP



Basic Information

Catalog Number:

16715-1-AP

Size:

400 ug/ml

Source:

Rabbit

Isotype:

IgG

Immunogen Catalog Number:

AG10137

GenBank Accession Number:

BC058003

GeneID (NCBI):

80896

UNIPROT ID:

Q9BXD5

Full Name:

N-acetylneuraminate pyruvate lyase
(dihydrodipicolinate synthase)

Calculated MW:

27 kDa, 35 kDa

Observed MW:

35 kDa

Purification Method:

Antigen affinity purification

Recommended Dilutions:

WB 1:500-1:2000

IHC 1:250-1:1000

IF/ICC 1:200-1:800

Applications

Tested Applications:

WB, IHC, IF/ICC, ELISA

Species Specificity:

human, mouse, rat

Note-IHC: suggested antigen retrieval with TE buffer pH 9.0; (*) Alternatively, antigen retrieval may be performed with citrate buffer pH 6.0

Positive Controls:

WB : mouse brain tissue, mouse kidney tissue, Raji cells, rat brain tissue, rat kidney tissue

IHC : human ovary cancer tissue,

IF/ICC : MCF-7 cells,

Background Information

The N-acetylneuraminate lyase(NPL) from human (hNAL) which consists of 320 amino acids, has a molecular mass of 35.2 kDa and it catalyses the reversible aldol reaction of sialic acid, and has been extensively used in the synthesis of sialic acids and its analogues(PMID:19057931). The enzyme is widely distributed and are present in numerous pro- and eukaryotic cells, in which they are localized only in the cytosol(PMID:12453637). It belongs to the DHDPS family and has 5 isoforms produced by alternative splicing.

Storage

Storage:

Store at -20°C. Stable for one year after shipment.

Storage Buffer:

PBS with 0.02% sodium azide and 50% glycerol pH 7.3.

Aliquoting is unnecessary for -20°C storage

For technical support and original validation data for this product please contact:

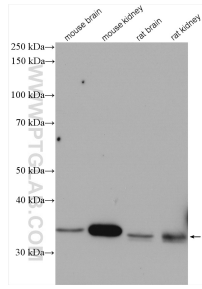
T: 4006900926

E: Proteintech-CN@ptglab.com

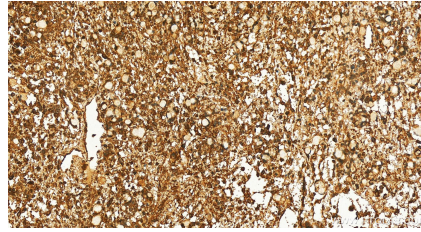
W: ptgcn.com

This product is exclusively available under Proteintech Group brand and is not available to purchase from any other manufacturer.

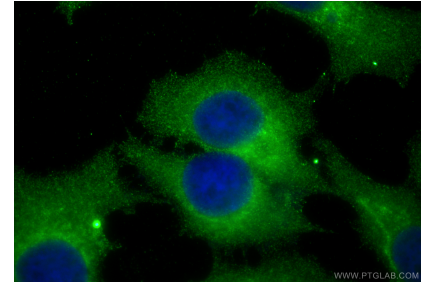
Selected Validation Data



Various lysates were subjected to SDS PAGE followed by western blot with 16715-1-AP (NPL antibody) at dilution of 1:1000 incubated at room temperature for 1.5 hours.



Immunohistochemical analysis of paraffin-embedded human ovary cancer tissue slide using 16715-1-AP (NPL antibody) at dilution of 1:500 (under 20x lens). Heat mediated antigen retrieval with Tris-EDTA buffer (pH 9.0).



Immunofluorescent analysis of (-20°C Methanol) fixed MCF-7 cells using NPL antibody (16715-1-AP) at dilution of 1:400 and Multi-rAb CoraLite® Plus 488-Goat Anti-Rabbit Recombinant Secondary Antibody (H+L) (RGAR002).