

For Research Use Only

# MRPL40 Polyclonal antibody

Catalog Number:16767-1-AP



## Basic Information

Catalog Number:

16767-1-AP

Size:

1200 ug/ml

Source:

Rabbit

Isotype:

IgG

Immunogen Catalog Number:

AG10341

GenBank Accession Number:

BC009707

GeneID (NCBI):

64976

UNIPROT ID:

Q9NQ50

Full Name:

mitochondrial ribosomal protein L40

Calculated MW:

206 aa, 24 kDa

Observed MW:

18-24 kDa

Purification Method:

Antigen affinity purification

Recommended Dilutions:

WB 1:1000-1:6000

IP 0.5-4.0 ug for 1.0-3.0 mg of total protein lysate

IHC 1:50-1:500

## Applications

Tested Applications:

WB, IHC, IP, ELISA

Species Specificity:

human

**Note-IHC: suggested antigen retrieval with TE buffer pH 9.0; (\*) Alternatively, antigen retrieval may be performed with citrate buffer pH 6.0**

Positive Controls:

WB : A549 cells, HeLa cells, HepG2 cells, K-562 cells

IP : HeLa cells,

IHC : human ovary cancer tissue,

## Background Information

### Storage

Storage:

Store at -20°C. Stable for one year after shipment.

Storage Buffer:

PBS with 0.02% sodium azide and 50% glycerol pH 7.3.

Aliquoting is unnecessary for -20°C storage

For technical support and original validation data for this product please contact:

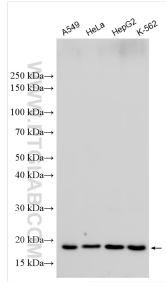
T: 4006900926

E: Proteintech-CN@ptglab.com

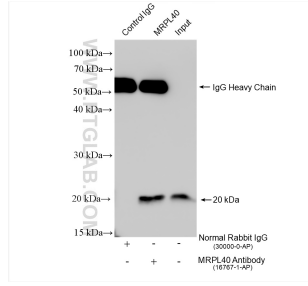
W: ptgcn.com

**This product is exclusively available under Proteintech Group brand and is not available to purchase from any other manufacturer.**

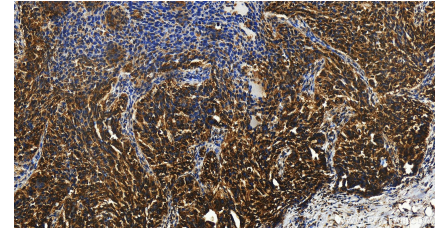
## Selected Validation Data



Various lysates were subjected to SDS PAGE followed by western blot with 16767-1-AP (MRPL40 antibody) at dilution of 1:3000 incubated at room temperature for 1.5 hours.



IP result of anti-MRPL40 (IP:16767-1-AP, 4ug; Detection:16767-1-AP 1:2000) with HeLa cells lysate 1920 ug.



Immunohistochemical analysis of paraffin-embedded human ovary cancer tissue slide using 16767-1-AP (MRPL40 antibody) at dilution of 1:200 (under 20x lens). Heat mediated antigen retrieval with Tris-EDTA buffer (pH 9.0).