

For Research Use Only

# SPR Polyclonal antibody

Catalog Number: 16822-1-AP **3 Publications**



## Basic Information

**Catalog Number:**

16822-1-AP

**Size:**

600 µg/ml

**Source:**

Rabbit

**Isotype:**

IgG

**Immunogen Catalog Number:**

AG10395

**GenBank Accession Number:**

BC017310

**GeneID (NCBI):**

6697

**UNIPROT ID:**

P35270

**Full Name:**

sepiapterin reductase (7,8-dihydrobiopterin:NADP+ oxidoreductase)

**Calculated MW:**

261 aa, 28 kDa

**Observed MW:**

28 kDa

**Purification Method:**

Antigen affinity purification

**Recommended Dilutions:**

WB 1:500-1:2000

IP 0.5-4.0 µg for 1.0-3.0 mg of total protein lysate

IHC 1:100-1:400

IF/ICC 1:10-1:100

## Applications

**Tested Applications:**

WB, IHC, IF/ICC, IP, ELISA

**Cited Applications:**

WB

**Species Specificity:**

human, mouse, rat

**Cited Species:**

human, mouse

**Note-IHC: suggested antigen retrieval with TE buffer pH 9.0; (\*) Alternatively, antigen retrieval may be performed with citrate buffer pH 6.0**

**Positive Controls:**

**WB:** HepG2 cells, rat heart tissue, rat liver tissue, human liver tissue, K-562 cells

**IP:** mouse liver tissue,

**IHC:** human liver cancer tissue,

**IF/ICC:** HeLa cells,

## Background Information

### Notable Publications

Author	Pubmed ID	Journal	Application
Angus Lindsay	33580591	Acta Physiol (Oxf)	WB
Mariluz Soula	32778843	Nat Chem Biol	WB
Xiaoqun Gu	36701995	Phytomedicine	WB

## Storage

**Storage:**

Store at -20°C. Stable for one year after shipment.

**Storage Buffer:**

PBS with 0.02% sodium azide and 50% glycerol pH 7.3.

Aliquoting is unnecessary for -20°C storage

For technical support and original validation data for this product please contact:

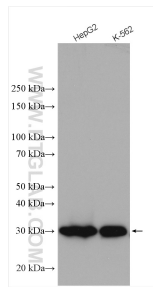
T: 4006900926

E: Proteintech-CN@ptglab.com

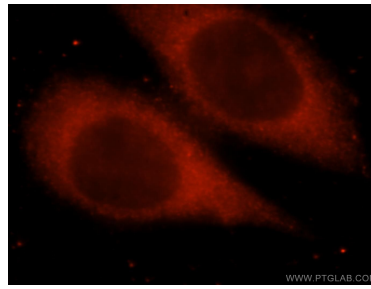
W: ptgcn.com

**This product is exclusively available under Proteintech Group brand and is not available to purchase from any other manufacturer.**

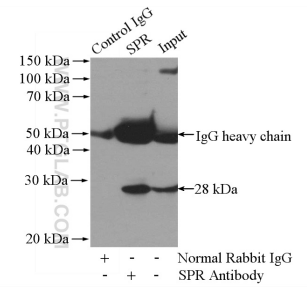
## Selected Validation Data



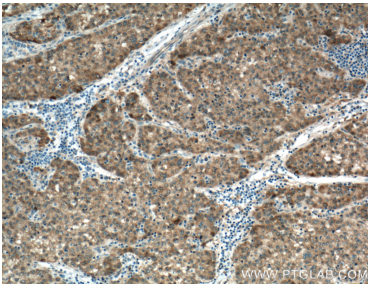
Various lysates were subjected to SDS PAGE followed by western blot with 16822-1-AP (SPR antibody) at dilution of 1:1000 incubated at room temperature for 1.5 hours.



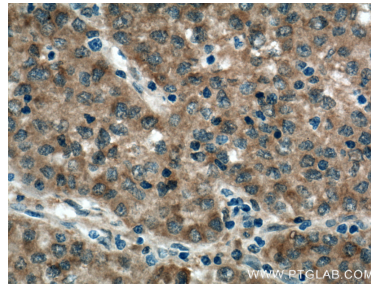
Immunofluorescent analysis of HeLa cells, using SPR antibody 16822-1-AP at 1:25 dilution and Rhodamine-labeled goat anti-rabbit IgG (red).



IP result of anti-SPR (IP:16822-1-AP, 4ug; Detection:16822-1-AP 1:500) with mouse liver tissue lysate 4000ug.



Immunohistochemical analysis of paraffin-embedded human liver cancer tissue slide using 16822-1-AP (SPR Antibody) at dilution of 1:200 (under 10x lens). Heat mediated antigen retrieval with Tris-EDTA buffer (pH 9.0).



Immunohistochemical analysis of paraffin-embedded human liver cancer tissue slide using 16822-1-AP (SPR Antibody) at dilution of 1:200 (under 40x lens). Heat mediated antigen retrieval with Tris-EDTA buffer (pH 9.0).