

For Research Use Only

# RBM26 Polyclonal antibody

Catalog Number: 16823-1-AP



## Basic Information

<b>Catalog Number:</b> 16823-1-AP	<b>GenBank Accession Number:</b> BC000791	<b>Purification Method:</b> Antigen affinity purification
<b>Size:</b> 350 µg/ml	<b>GeneID (NCBI):</b> 64062	<b>Recommended Dilutions:</b> WB 1:2000-1:12000
<b>Source:</b> Rabbit	<b>UNIPROT ID:</b> Q5T8P6	IP 0.5-4.0 µg for 1.0-3.0 mg of total protein lysate
<b>Isotype:</b> IgG	<b>Full Name:</b> RNA binding motif protein 26	IHC 1:20-1:200
<b>Immunogen Catalog Number:</b> AG10398	<b>Calculated MW:</b> 983 aa, 111 kDa	IF/ICC 1:20-1:200
	<b>Observed MW:</b> 125 kDa	

## Applications

<b>Tested Applications:</b> IF/ICC, IHC, IP, WB, ELISA	<b>Positive Controls:</b> WB : HEK-293 cells, HeLa cells, Jurkat cells
<b>Species Specificity:</b> human, mouse, rat	IP : HEK-293 cells,
<b>Note-IHC: suggested antigen retrieval with TE buffer pH 9.0; (*) Alternatively, antigen retrieval may be performed with citrate buffer pH 6.0</b>	IHC : human brain tissue,
	IF/ICC : HepG2 cells,

## Background Information

### Storage

**Storage:**  
Store at -20°C. Stable for one year after shipment.  
**Storage Buffer:**  
PBS with 0.02% sodium azide and 50% glycerol pH 7.3.  
Aliquoting is unnecessary for -20°C storage

For technical support and original validation data for this product please contact:

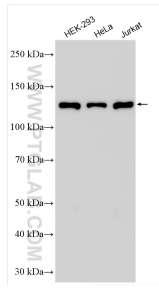
T: 4006900926

E: Proteintech-CN@ptglab.com

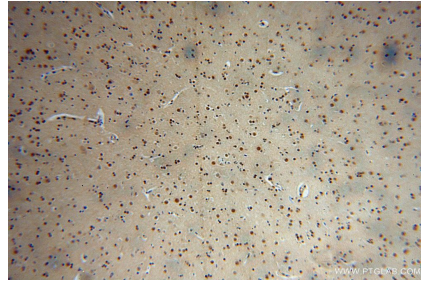
W: ptgcn.com

This product is exclusively available under Proteintech Group brand and is not available to purchase from any other manufacturer.

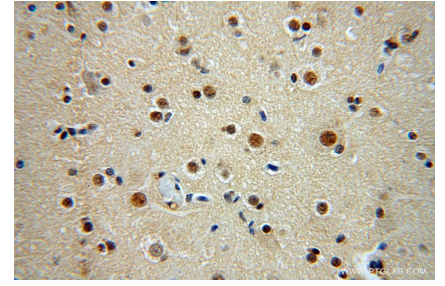
## Selected Validation Data



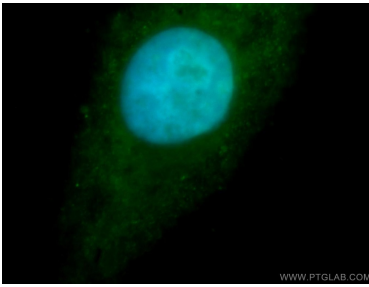
Various lysates were subjected to SDS PAGE followed by western blot with 16823-1-AP (RBM26 antibody) at dilution of 1:6000 incubated at room temperature for 1.5 hours.



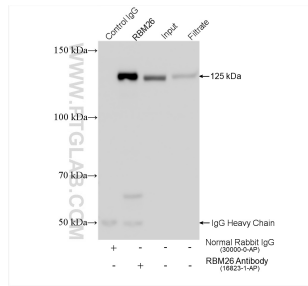
Immunohistochemical analysis of paraffin-embedded human brain using 16823-1-AP (RBM26 antibody) at dilution of 1:100 (under 10x lens).



Immunohistochemical analysis of paraffin-embedded human brain using 16823-1-AP (RBM26 antibody) at dilution of 1:100 (under 40x lens).



Immunofluorescent analysis of HepG2 cells, using RBM26 antibody 16823-1-AP at 1:100 dilution and FITC-labeled donkey anti-rabbit IgG (green). Blue pseudocolor = DAPI (fluorescent DNA dye).



IP result of anti-RBM26 (IP:16823-1-AP, 4ug; Detection:16823-1-AP 1:5000) with HEK-293 cells lysate 1400 ug.