

For Research Use Only

# ROGDI Polyclonal antibody

Catalog Number: 17047-1-AP

Featured Product

5 Publications



## Basic Information

**Catalog Number:**

17047-1-AP

**Size:**

300 µg/ml

**Source:**

Rabbit

**Isotype:**

IgG

**Immunogen Catalog Number:**

AG10688

**GenBank Accession Number:**

BC012901

**GeneID (NCBI):**

79641

**UNIPROT ID:**

Q9GZN7

**Full Name:**

rogdi homolog (Drosophila)

**Calculated MW:**

287 aa, 32 kDa

**Observed MW:**

32 kDa

**Purification Method:**

Antigen affinity purification

**Recommended Dilutions:**

WB 1:500-1:2000

IP 0.5-4.0 µg for 1.0-3.0 mg of total protein lysate

IHC 1:20-1:200

## Applications

**Tested Applications:**

IHC, IP, WB, ELISA

**Cited Applications:**

WB, IF, IHC

**Species Specificity:**

human, mouse

**Cited Species:**

human, rat, mouse, Drosophila

**Note-IHC: suggested antigen retrieval with TE buffer pH 9.0; (\*) Alternatively, antigen retrieval may be performed with citrate buffer pH 6.0**

**Positive Controls:**

**WB:** human brain tissue, human kidney tissue, mouse brain tissue

**IP:** mouse brain tissue,

**IHC:** human kidney tissue, human placenta tissue, human spleen tissue

## Background Information

ROGDI encoded by the ROGDI gene, which encodes a leucine-zipper protein with high expression in the human spinal cord and brain, acts as a positive regulator of cell proliferation. Defections of ROGDI are the cause of Kohlschuetter-Toenz syndrome (KTZS)

## Notable Publications

Author	Pubmed ID	Journal	Application
Donatus Riemann	29150638	Sci Rep	WB, IF
Yi-Fan Chen	27636029	Cancer Biol Ther	WB
Alexandra Jimenez-Armijo	38172607	Sci Rep	IHC

## Storage

**Storage:**

Store at -20°C. Stable for one year after shipment.

**Storage Buffer:**

PBS with 0.02% sodium azide and 50% glycerol pH 7.3.

Aliquoting is unnecessary for -20°C storage

For technical support and original validation data for this product please contact:

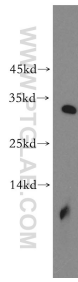
T: 4006900926

E: Proteintech-CN@ptglab.com

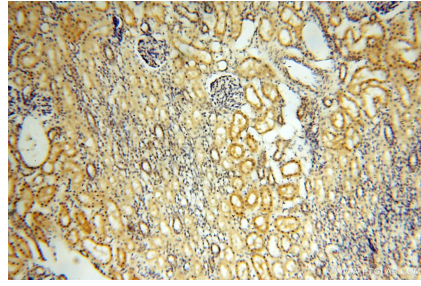
W: ptgcn.com

**This product is exclusively available under Proteintech Group brand and is not available to purchase from any other manufacturer.**

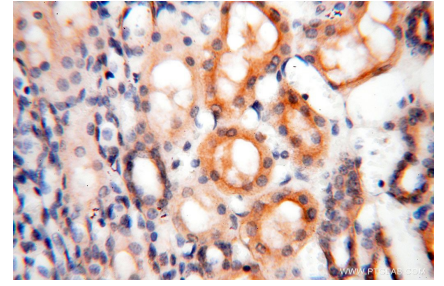
## Selected Validation Data



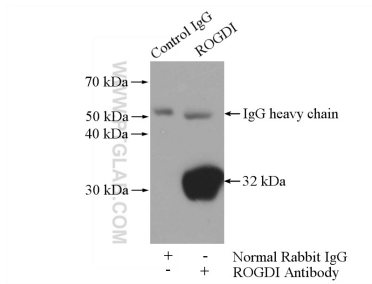
human brain tissue were subjected to SDS PAGE followed by western blot with 17047-1-AP (ROGDI antibody) at dilution of 1:500 incubated at room temperature for 1.5 hours.



Immunohistochemical analysis of paraffin-embedded human kidney using 17047-1-AP (ROGDI antibody) at dilution of 1:100 (under 10x lens).



Immunohistochemical analysis of paraffin-embedded human kidney using 17047-1-AP (ROGDI antibody) at dilution of 1:100 (under 40x lens).



IP result of anti-ROGDI (IP:17047-1-AP, 4ug; Detection:17047-1-AP 1:500) with mouse brain tissue lysate 4000ug.