

For Research Use Only

# STARD10 Polyclonal antibody

Catalog Number: 17048-1-AP



## Basic Information

**Catalog Number:**

17048-1-AP

**Size:**

600 µg/ml

**Source:**

Rabbit

**Isotype:**

IgG

**Immunogen Catalog Number:**

AG10705

**GenBank Accession Number:**

BC007919

**GeneID (NCBI):**

10809

**UNIPROT ID:**

Q9Y365

**Full Name:**

StAR-related lipid transfer (START) domain containing 10

**Calculated MW:**

291 aa, 33 kDa

**Observed MW:**

35-40 kDa

**Purification Method:**

Antigen affinity purification

**Recommended Dilutions:**

WB 1:1000-1:8000

IP 0.5-4.0 µg for 1.0-3.0 mg of total protein lysate

IHC 1:20-1:200

## Applications

**Tested Applications:**

IHC, IP, WB, ELISA

**Species Specificity:**

human

**Note-IHC: suggested antigen retrieval with TE buffer pH 9.0; (\*) Alternatively, antigen retrieval may be performed with citrate buffer pH 6.0**

**Positive Controls:**

WB: MCF-7 cells, T-47D cells

IP: HepG2 cells,

IHC: human liver tissue,

## Background Information

STARD10 (START domain-containing protein 10, also known as PCTP-like protein) is highly expressed in liver and responsible to transfer phosphatidylcholine. STARD10 was identified as a protein overexpressed in breast cancer that cooperates with the ErbB family of receptor tyrosine kinases in cellular transformation (PMID: 15911624). This antibody detected duplicate bands between 35-40 kDa (PMID: 15150109).

## Storage

**Storage:**

Store at -20°C. Stable for one year after shipment.

**Storage Buffer:**

PBS with 0.02% sodium azide and 50% glycerol pH 7.3.

Aliquoting is unnecessary for -20°C storage

For technical support and original validation data for this product please contact:

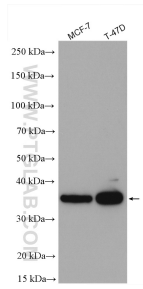
T: 4006900926

E: [Proteintech-CN@ptglab.com](mailto:Proteintech-CN@ptglab.com)

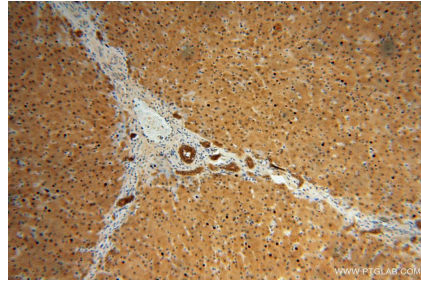
W: [ptgcn.com](http://ptgcn.com)

**This product is exclusively available under Proteintech Group brand and is not available to purchase from any other manufacturer.**

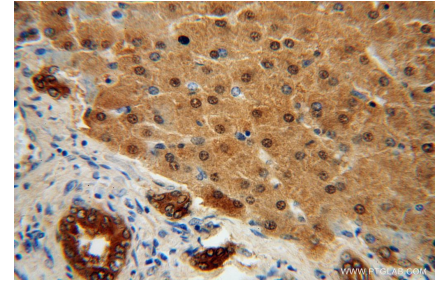
## Selected Validation Data



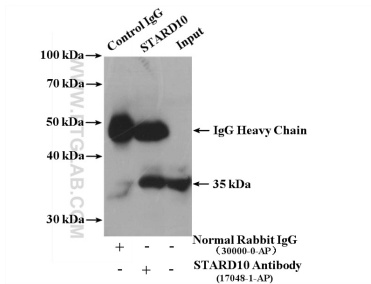
Various lysates were subjected to SDS PAGE followed by western blot with 17048-1-AP (STARD10 antibody) at dilution of 1:4000 incubated at room temperature for 1.5 hours.



Immunohistochemical analysis of paraffin-embedded human liver using 17048-1-AP (STARD10 antibody) at dilution of 1:100 (under 10x lens).



Immunohistochemical analysis of paraffin-embedded human liver using 17048-1-AP (STARD10 antibody) at dilution of 1:100 (under 40x lens).



IP result of anti-STARD10 (IP:17048-1-AP, 4ug; Detection:17048-1-AP 1:300) with HepG2 cells lysate 3400 ug.