

For Research Use Only

# PYCR2 Polyclonal antibody

Catalog Number: 17146-1-AP

Featured Product

24 Publications



## Basic Information

Catalog Number:

17146-1-AP

Size:

500 µg/ml

Source:

Rabbit

Isotype:

IgG

Immunogen Catalog Number:

AG10918

GenBank Accession Number:

BC020553

GeneID (NCBI):

29920

UNIPROT ID:

Q96C36

Full Name:

pyrroline-5-carboxylate reductase family, member 2

Calculated MW:

320 aa, 34 kDa

Observed MW:

34 kDa

Purification Method:

Antigen affinity purification

Recommended Dilutions:

WB 1:2000-1:10000

IHC 1:1500-1:6000

IF/ICC 1:200-1:800

## Applications

Tested Applications:

WB, IHC, IF/ICC, ELISA

Cited Applications:

WB, IHC, IF

Species Specificity:

human, mouse, rat

Cited Species:

human, mouse, african green monkey

**Note-IHC: suggested antigen retrieval with TE buffer pH 9.0; (\*) Alternatively, antigen retrieval may be performed with citrate buffer pH 6.0**

Positive Controls:

WB : HeLa cells, L02 cells, Jurkat cells

IHC : human breast cancer tissue, human placenta tissue, human kidney tissue, human testis tissue, human lung tissue

IF/ICC : HeLa cells,

## Background Information

PYCR2, also named as P5CR2, belongs to the pyrroline-5-carboxylate reductase family. It catalyses the reaction: L-proline + NAD(P)<sup>+</sup> = 1-pyrroline-5-carboxylate + NAD(P)H. This antibody may have cross reaction to PYCR1 due to the high homology.

## Notable Publications

Author	Pubmed ID	Journal	Application
Wei Liu	26598224	Sci Rep	WB
Yao Lu	35669517	Front Cell Dev Biol	WB
Simon Schwörer	32134147	EMBO J	WB

## Storage

Storage:

Store at -20°C. Stable for one year after shipment.

Storage Buffer:

PBS with 0.02% sodium azide and 50% glycerol pH 7.3.

Aliquoting is unnecessary for -20°C storage

For technical support and original validation data for this product please contact:

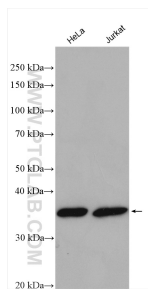
T: 4006900926

E: [Proteintech-CN@ptglab.com](mailto:Proteintech-CN@ptglab.com)

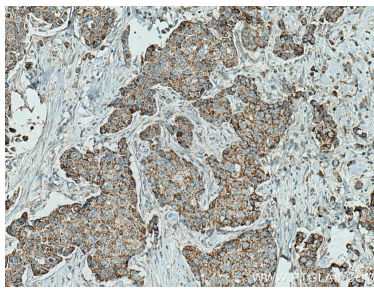
W: [ptgcn.com](http://ptgcn.com)

This product is exclusively available under Proteintech Group brand and is not available to purchase from any other manufacturer.

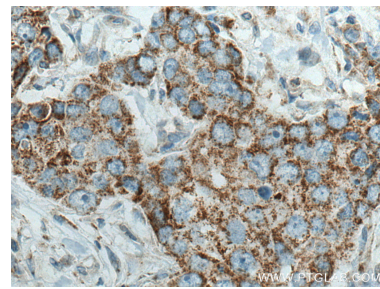
## Selected Validation Data



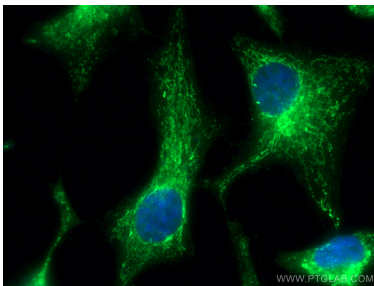
Various lysates were subjected to SDS PAGE followed by western blot with 17146-1-AP (PYCR2 antibody) at dilution of 1:5000 incubated at room temperature for 1.5 hours.



Immunohistochemical analysis of paraffin-embedded human breast cancer tissue slide using 17146-1-AP (PYCR2 antibody) at dilution of 1:3000 (under 10x lens). Heat mediated antigen retrieval with Tris-EDTA buffer (pH 9.0).



Immunohistochemical analysis of paraffin-embedded human breast cancer tissue slide using 17146-1-AP (PYCR2 antibody) at dilution of 1:3000 (under 40x lens). Heat mediated antigen retrieval with Tris-EDTA buffer (pH 9.0).



Immunofluorescent analysis of (4% PFA) fixed HeLa cells using PYCR2 antibody (17146-1-AP) at dilution of 1:400 and CoraLite®488-Conjugated Goat Anti-Rabbit IgG(H+L).