

For Research Use Only

CAPSL Polyclonal antibody

Catalog Number: 17174-1-AP **1 Publications**



Basic Information

| | | |
|---|--|--|
| Catalog Number: 17174-1-AP | GenBank Accession Number: BC017586 | Purification Method: Antigen affinity purification |
| Size: 700 µg/ml | GeneID (NCBI): 133690 | Recommended Dilutions: WB 1:500-1:2000 |
| Source: Rabbit | UNIPROT ID: Q8WWF8 | IP 0.5-4.0 ug for 1.0-3.0 mg of total protein lysate |
| Isotype: IgG | Full Name: calcyphosine-like | IHC 1:20-1:200 |
| Immunogen Catalog Number: AG10771 | Calculated MW: 198 aa, 23 kDa | |
| | Observed MW: 24 kDa | |

Applications

| | |
|--|--|
| Tested Applications: IHC, IP, WB, ELISA | Positive Controls: WB : mouse lung tissue, IP : mouse lung tissue, IHC : human lung cancer tissue, |
| Cited Applications: WB | |
| Species Specificity: human, mouse, rat | |
| Cited Species: mouse | |
| Note-IHC: suggested antigen retrieval with TE buffer pH 9.0; (*) Alternatively, antigen retrieval may be performed with citrate buffer pH 6.0 | |

Background Information

Notable Publications

| Author | Pubmed ID | Journal | Application |
|---------------|-----------|---------|-------------|
| Angie Lindner | 31186450 | Sci Rep | WB |

Storage

Storage:
Store at -20°C. Stable for one year after shipment.
Storage Buffer:
PBS with 0.02% sodium azide and 50% glycerol pH 7.3.
Aliquoting is unnecessary for -20°C storage

For technical support and original validation data for this product please contact:

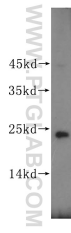
T: 4006900926

E: Proteintech-CN@ptglab.com

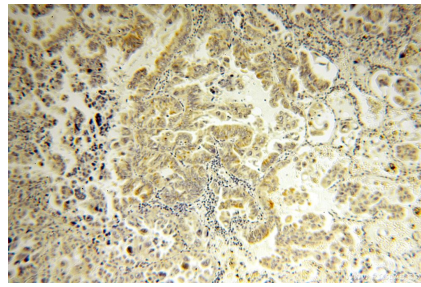
W: ptgcn.com

This product is exclusively available under Proteintech Group brand and is not available to purchase from any other manufacturer.

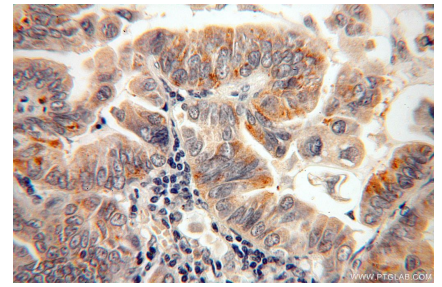
Selected Validation Data



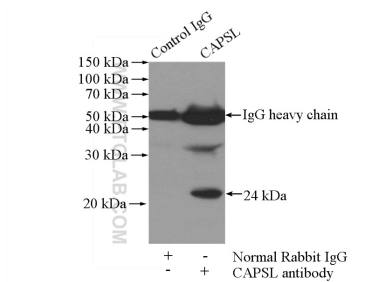
mouse lung tissue were subjected to SDS PAGE followed by western blot with 17174-1-AP (CAPSL antibody) at dilution of 1:800 incubated at room temperature for 1.5 hours.



Immunohistochemical analysis of paraffin-embedded human lung cancer using 17174-1-AP (CAPSL antibody) at dilution of 1:100 (under 10x lens).



Immunohistochemical analysis of paraffin-embedded human lung cancer using 17174-1-AP (CAPSL antibody) at dilution of 1:100 (under 40x lens).



IP result of anti-CAPSL (IP:17174-1-AP, 4ug; Detection:17174-1-AP 1:500) with mouse lung tissue lysate 4000ug.