

For Research Use Only

LETM2 Polyclonal antibody

Catalog Number: 17180-1-AP

Featured Product

4 Publications



Basic Information

Catalog Number:

17180-1-AP

Size:

700 µg/ml

Source:

Rabbit

Isotype:

IgG

Immunogen Catalog Number:

AG10900

GenBank Accession Number:

BC029541

GeneID (NCBI):

137994

UNIPROT ID:

Q2VYF4

Full Name:

leucine zipper-EF-hand containing transmembrane protein 2

Calculated MW:

277 aa, 31 kDa

Purification Method:

Antigen affinity purification

Recommended Dilutions:

IHC 1:20-1:200

Applications

Tested Applications:

IHC, ELISA

Cited Applications:

WB, IHC

Species Specificity:

human

Cited Species:

human

Note-IHC: suggested antigen retrieval with TE buffer pH 9.0; (*) Alternatively, antigen retrieval may be performed with citrate buffer pH 6.0

Positive Controls:

IHC: human placenta tissue, human small intestine tissue

Background Information

Notable Publications

Author	Pubmed ID	Journal	Application
Shurui Zhou	36230646	Cancers (Basel)	WB,IHC
Yuhong Zhang	34628513	J Mol Med (Berl)	WB
Caixia Cheng	26833333	Am J Hum Genet	WB,IHC

Storage

Storage:

Store at -20°C. Stable for one year after shipment.

Storage Buffer:

PBS with 0.02% sodium azide and 50% glycerol pH 7.3.

Aliquoting is unnecessary for -20°C storage

For technical support and original validation data for this product please contact:

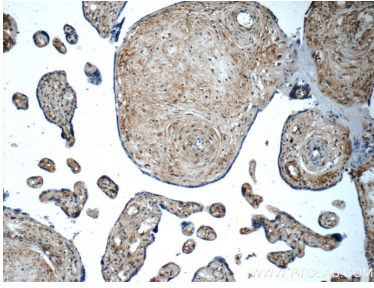
T: 4006900926

E: Proteintech-CN@ptglab.com

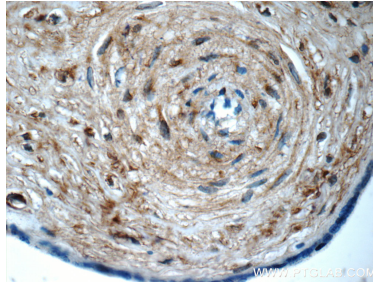
W: ptgcn.com

This product is exclusively available under Proteintech Group brand and is not available to purchase from any other manufacturer.

Selected Validation Data



Immunohistochemical analysis of paraffin-embedded human placenta tissue slide using 17180-1-AP (LETM2 Antibody) at dilution of 1:50 (under 10x lens).



Immunohistochemical analysis of paraffin-embedded human placenta tissue slide using 17180-1-AP (LETM2 Antibody) at dilution of 1:50 (under 40x lens).