

For Research Use Only

MRPL50 Polyclonal antibody

Catalog Number: 17213-1-AP



Basic Information

Catalog Number: 17213-1-AP	GenBank Accession Number: BC032008	Purification Method: Antigen affinity purification
Size: 300 µg/ml	GeneID (NCBI): 54534	Recommended Dilutions: WB 1:500-1:2000 IHC 1:50-1:500
Source: Rabbit	UNIPROT ID: Q8N5N7	
Isotype: IgG	Full Name: mitochondrial ribosomal protein L50	
Immunogen Catalog Number: AG10996	Calculated MW: 158 aa, 18 kDa	
	Observed MW: 18 kDa	

Applications

Tested Applications: IHC, WB, ELISA	Positive Controls: WB : HT-1080 cells, HeLa cells, HepG2 cells IHC : human liver tissue,
Species Specificity: human	
Note-IHC: suggested antigen retrieval with TE buffer pH 9.0; (*) Alternatively, antigen retrieval may be performed with citrate buffer pH 6.0	

Background Information

MRPL50, also named as L50mt, is a mitochondrial protein with MW 18 kDa.

Storage

Storage:
Store at -20°C. Stable for one year after shipment.
Storage Buffer:
PBS with 0.02% sodium azide and 50% glycerol pH 7.3.
Aliquoting is unnecessary for -20°C storage

For technical support and original validation data for this product please contact:

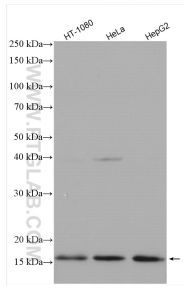
T: 4006900926

E: Proteintech-CN@ptglab.com

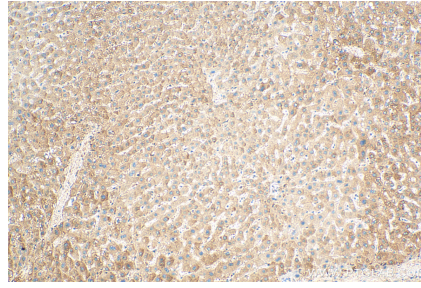
W: ptgcn.com

This product is exclusively available under Proteintech Group brand and is not available to purchase from any other manufacturer.

Selected Validation Data



Various lysates were subjected to SDS PAGE followed by western blot with 17213-1-AP (MRPL50 antibody) at dilution of 1:1000 incubated at room temperature for 1.5 hours.



Immunohistochemical analysis of paraffin-embedded human liver tissue slide using 17213-1-AP (MRPL50 antibody) at dilution of 1:200 (under 10x lens). Heat mediated antigen retrieval with Tris-EDTA buffer (pH 9.0).