

For Research Use Only

GPD2 Polyclonal antibody

Catalog Number:17219-1-AP

Featured Product

15 Publications



Basic Information

Catalog Number:

17219-1-AP

Size:

1000 µg/ml

Source:

Rabbit

Isotype:

IgG

Immunogen Catalog Number:

AG11036

GenBank Accession Number:

BC019874

GeneID (NCBI):

2820

UNIPROT ID:

P43304

Full Name:

glycerol-3-phosphate dehydrogenase 2 (mitochondrial)

Calculated MW:

41 kDa, 81 kDa

Observed MW:

68 kDa

Purification Method:

Antigen affinity purification

Recommended Dilutions:

WB 1:1000-1:8000

IP 0.5-4.0 µg for 1.0-3.0 mg of total protein lysate

IHC 1:250-1:1000

Applications

Tested Applications:

WB, IP, IHC, ELISA

Cited Applications:

WB, IP

Species Specificity:

human, mouse, rat

Cited Species:

human, mouse, rat

Note-IHC: suggested antigen retrieval with TE buffer pH 9.0; (*) Alternatively, antigen retrieval may be performed with citrate buffer pH 6.0

Positive Controls:

WB : HeLa cells, mouse skeletal muscle tissue, mouse liver tissue

IP : mouse skeletal muscle tissue,

IHC : mouse testis tissue,

Background Information

GPD2(Glycerol-3-phosphate dehydrogenase, mitochondrial) belongs to the FAD-dependent glycerol-3-phosphate dehydrogenase family.It is phosphorylated only in capacitated hamster spermatozoa and is noncanonically localized in the acrosome and principal piece in human, mouse, rat, and hamster spermatozoa, though in somatic cells it is localized in the mitochondria. This noncanonical localization may imply a role of GPD2 in acrosome reaction and hyperactivation(PMID:19333995).

Notable Publications

Author	Pubmed ID	Journal	Application
Derick Han	27867097	Free Radic Biol Med	WB
Maxence Le Vasseur	34034859	Elife	WB
Shiqi Wu	35749365	Proc Natl Acad Sci U S A	WB

Storage

Storage:

Store at -20°C. Stable for one year after shipment.

Storage Buffer:

PBS with 0.02% sodium azide and 50% glycerol pH 7.3.

Aliquoting is unnecessary for -20°C storage

For technical support and original validation data for this product please contact:

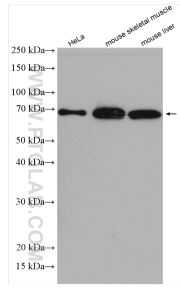
T: 4006900926

E: Proteintech-CN@ptglab.com

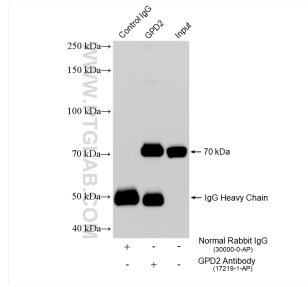
W: ptgcn.com

This product is exclusively available under Proteintech Group brand and is not available to purchase from any other manufacturer.

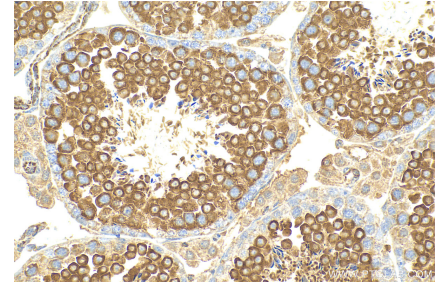
Selected Validation Data



Various lysates were subjected to SDS PAGE followed by western blot with 17219-1-AP (GPD2 antibody) at dilution of 1:4000 incubated at room temperature for 1.5 hours.



IP result of anti-GPD2 (IP:17219-1-AP, 4ug; Detection:17219-1-AP 1:8000) with mouse skeletal muscle tissue lysate 1280 ug.



Immunohistochemical analysis of paraffin-embedded mouse testis tissue slide using 17219-1-AP (GPD2 antibody) at dilution of 1:500 (under 40x lens). Heat mediated antigen retrieval with Tris-EDTA buffer (pH 9.0).