

For Research Use Only

CD5L Polyclonal antibody

Catalog Number: 17224-1-AP



Basic Information

Catalog Number: 17224-1-AP	GenBank Accession Number: BC033586	Purification Method: Antigen affinity purification
Size: 130 µg/ml	GeneID (NCBI): 922	Recommended Dilutions: WB 1:500-1:2000 IF 1:50-1:500
Source: Rabbit	UNIPROT ID: O43866	
Isotype: IgG	Full Name: CD5 molecule-like	
Immunogen Catalog Number: AG11062	Calculated MW: 347 aa, 38 kDa	
	Observed MW: 40 kDa	

Applications

Tested Applications: WB, IF/ICC, ELISA	Positive Controls: WB : human plasma, IF : HepG2 cells,
Species Specificity: human	

Background Information

CD5 molecule-like (CD5L), also known as apoptosis inhibitor expressed by macrophages (AIM), SP-alpha, apoptosis inhibitor 6 (API6), is a member of the scavenger receptor cysteine-rich (SRCR) family of proteins (PMID: 9045627; 9892623). CD5L is a soluble protein mainly secreted mostly by macrophages in lymphoid and inflamed tissues (PMID: 15009805). It contains three SRCR domains, each approximately 100 amino acids in length with sialic acid content at a potential region of O-linked glycosylation between SRCR domains 1 and 2. CD5L is involved in different processes such as metabolism, infection and autophagy (PMID: 33920819).

Storage

Storage:
Store at -20°C. Stable for one year after shipment.
Storage Buffer:
PBS with 0.02% sodium azide and 50% glycerol pH 7.3.
Aliquoting is unnecessary for -20°C storage

For technical support and original validation data for this product please contact:

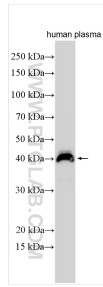
T: 4006900926

E: Proteintech-CN@ptglab.com

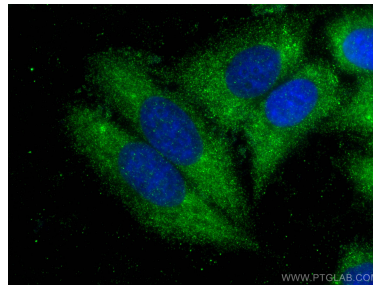
W: ptgcn.com

This product is exclusively available under Proteintech Group brand and is not available to purchase from any other manufacturer.

Selected Validation Data



human plasma was subjected to SDS PAGE followed by western blot with 17224-1-AP (CD5L antibody) at dilution of 1:1000 incubated at room temperature for 1.5 hours.



Immunofluorescent analysis of (-20°C Ethanol) fixed HepG2 cells using CD5L antibody (17224-1-AP) at dilution of 1:200 and CoraLite® 488-Conjugated AffiniPure Goat Anti-Rabbit IgG(H+L).