

## MRPS27 Polyclonal antibody

Catalog Number: 17280-1-AP

Featured Product

26 Publications

## Basic Information

## Catalog Number:

17280-1-AP

## Size:

550 µg/ml

## Source:

Rabbit

## Isotype:

IgG

## Immunogen Catalog Number:

AG11047

## GenBank Accession Number:

BC030521

## GeneID (NCBI):

23107

## UNIPROT ID:

Q92552

## Full Name:

mitochondrial ribosomal protein S27

## Calculated MW:

168 aa, 19 kDa, 48 kDa

## Observed MW:

48 kDa

## Purification Method:

Antigen affinity purification

## Recommended Dilutions:

WB 1:500-1:2000

IP 0.5-4.0 µg for 1.0-3.0 mg of total protein lysate

IHC 1:20-1:200

IF 1:50-1:500

## Applications

## Tested Applications:

IF/ICC, IHC, IP, WB, ELISA

## Cited Applications:

IF, WB

## Species Specificity:

human, mouse, rat

## Cited Species:

human, mouse

**Note-IHC: suggested antigen retrieval with TE buffer pH 9.0; (\*) Alternatively, antigen retrieval may be performed with citrate buffer pH 6.0**

## Positive Controls:

**WB:** A431 cells, human heart tissue, human skeletal muscle tissue

**IP:** A431 cells,

**IHC:** human kidney tissue, human lung tissue, human spleen tissue, human testis tissue

**IF:** HepG2 cells,

## Background Information

Genes encoding PPR (pentatricopeptide repeat)-containing proteins constitute one of the largest gene families in plants. The majority of these proteins are predicted to target organelles and to bind to RNA. Strikingly, there is a dearth of these proteins in mammals, although genomic searches reveal six candidates, all of which are also predicted to target the mitochondrion. One of these proteins, MRPS27 is participated in transcription and translation respectively. [PMID:18939947] MRPS27 is a component of the small subunit of the mitochondrial ribosome that is encoded by the nuclear genome [PMID: 11279123].

## Notable Publications

Author	Pubmed ID	Journal	Application
Uwe Richter	30262910	Nat Commun	WB
Marie Bisconti	36120567	Front Cell Dev Biol	IF
Uwe Richter	26504172	J Cell Biol	WB

## Storage

## Storage:

Store at -20°C. Stable for one year after shipment.

## Storage Buffer:

PBS with 0.02% sodium azide and 50% glycerol pH 7.3.

Aliquoting is unnecessary for -20°C storage

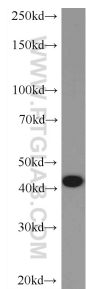
For technical support and original validation data for this product please contact:

T: 4006900926

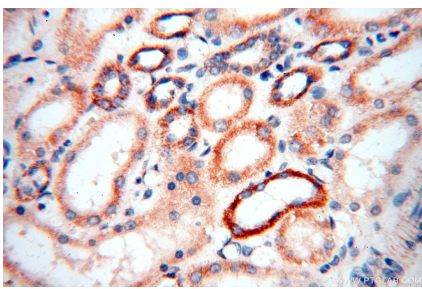
E: [Proteintech-CN@ptglab.com](mailto:Proteintech-CN@ptglab.com)W: [ptgcn.com](http://ptgcn.com)

**This product is exclusively available under Proteintech Group brand and is not available to purchase from any other manufacturer.**

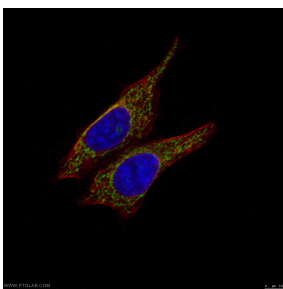
Selected Validation Data



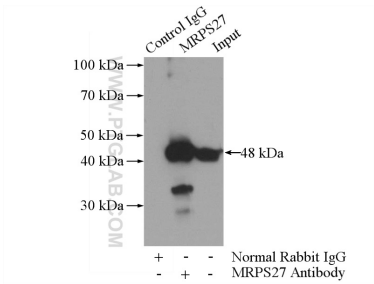
A431 cells were subjected to SDS PAGE followed by western blot with 17280-1-AP (MRPS27 Antibody) at dilution of 1:1000 incubated at room temperature for 1.5 hours.



Immunohistochemical analysis of paraffin-embedded human kidney using 17280-1-AP (MRPS27 antibody) at dilution of 1:100 (under 40x lens).



Immunofluorescent analysis of (-20°C Ethanol) fixed HepG2 cells using MRPS27 rabbit poly (17280-1-AP, Green) and KRT18 mouse mAb (66187-1-Ig, Red) at dilution of 1:50, further stained with Alexa Fluor 488-Conjugated AffiniPure Goat Anti-Rabbit IgG(H+L) for 17280-1-AP, and Alexa Fluor 594-conjugated AffiniPure Goat Anti-Mouse IgG (H+L) for 66187-1-Ig.



IP result of anti-MRPS27 (IP:17280-1-AP, 3ug; Detection:17280-1-AP 1:1000) with A431 cells lysate 1520ug.