

For Research Use Only

Plasminogen Polyclonal antibody, PBS Only

Catalog Number: 17462-1-PBS



Basic Information

Catalog Number: 17462-1-PBS	GenBank Accession Number: BC060513	Purification Method: Antigen affinity purification
Size: 1 mg/ml	GeneID (NCBI): 5340	
Source: Rabbit	UNIPROT ID: P00747	
Isotype: IgG	Full Name: plasminogen	
Immunogen Catalog Number: AG11217	Calculated MW: 810 aa, 91 kDa	
	Observed MW: 97 kDa	

Applications

Tested Applications:
WB, IHC, IF/ICC, Indirect ELISA

Species Specificity:
human

Background Information

Plasminogen is a secreted blood zymogen that is activated by proteolysis and converted to plasmin and angiostatin. Plasminogen plays an important role in fibrinolysis as well as wound healing, cell migration, tissue modeling and angiogenesis. Plasminogen is synthesized in the liver, and it circulates in the blood, with a half-life of 2.2 days. Plasminogen is the precursor of plasmin, which lyses fibrin clots to fibrin degradation products (FDP) and D-dimer; the conversion to active protease is mediated by tissue-type (tPA) and urokinase-type (uPA) plasminogen activators. Defects in plasminogen are likely a cause of thrombophilia and ligneous conjunctivitis.

Storage

Storage:
Store at -80°C.
The product is shipped with ice packs. Upon receipt, store it immediately at -80°C

Storage Buffer:
PBS Only

For technical support and original validation data for this product please contact:

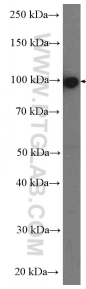
T: 4006900926

E: Proteintech-CN@ptglab.com

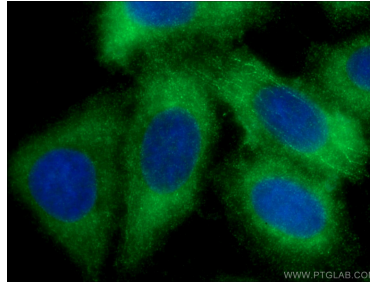
W: ptgcn.com

This product is exclusively available under Proteintech Group brand and is not available to purchase from any other manufacturer.

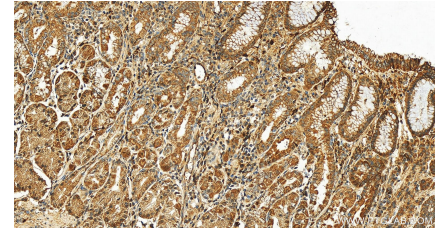
Selected Validation Data



human blood were subjected to SDS PAGE followed by western blot with 17462-1-AP (Plasminogen antibody at dilution of 1:2000 incubated at room temperature for 1.5 hours. This data was developed using the same antibody clone with 17462-1-PBS in a different storage buffer formulation.



Immunofluorescent analysis of (-20°C Ethanol) fixed HepG2 cells using 17462-1-AP (Plasminogen antibody) at dilution of 1:50 and CoraLite488-Conjugated AffiniPure Goat Anti-Rabbit IgG(H+L). This data was developed using the same antibody clone with 17462-1-PBS in a different storage buffer formulation.



Immunohistochemical analysis of paraffin-embedded human stomach tissue slide using 17462-1-AP (Plasminogen antibody) at dilution of 1:200 (under 20x lens). Heat mediated antigen retrieval with Tris-EDTA buffer (pH 9.0). This data was developed using the same antibody clone with 17462-1-PBS in a different storage buffer formulation.