

For Research Use Only

# GUF1 Polyclonal antibody

Catalog Number: 17489-1-AP

Featured Product



## Basic Information

**Catalog Number:**

17489-1-AP

**Size:**

500 µg/ml

**Source:**

Rabbit

**Isotype:**

IgG

**Immunogen Catalog Number:**

AG11579

**GenBank Accession Number:**

BC036768

**GeneID (NCBI):**

60558

**UNIPROT ID:**

Q8N442

**Full Name:**

GUF1 GTPase homolog (S. cerevisiae)

**Calculated MW:**

669 aa, 74 kDa

**Observed MW:**

70 kDa

**Purification Method:**

Antigen affinity purification

**Recommended Dilutions:**

WB 1:500-1:2400

IP 0.5-4.0 µg for 1.0-3.0 mg of total protein lysate

IHC 1:20-1:200

IF/ICC 1:10-1:100

## Applications

**Tested Applications:**

WB, IHC, IF/ICC, IP, ELISA

**Species Specificity:**

human, mouse

**Note-IHC: suggested antigen retrieval with TE buffer pH 9.0; (\*) Alternatively, antigen retrieval may be performed with citrate buffer pH 6.0**

**Positive Controls:**

**WB:** HeLa cells, mouse brain tissue, HepG2 cells, mouse pancreas tissue

**IP:** HeLa cells,

**IHC:** human oesophagus tissue, human lung cancer tissue, human kidney tissue, human testis tissue

**IF/ICC:** HepG2 cells,

## Background Information

GUF1 (GUF1 GTPase), also known as EF-4 (elongation factor 4 homolog), is a 669 amino acid protein belonging to the GTP-binding elongation factor family and the LepA subfamily. Localizing to the mitochondrion inner membrane, GUF1 promotes mitochondrial protein synthesis and binds to mitochondrial ribosomes in a GTP-dependent manner. GUF1 may act as a fidelity factor of the translation reaction, by catalyzing a one-codon backward translocation of tRNAs on improperly translocated ribosomes. In western blotting, we got double bands 74 kDa and 70 kDa, due to the N-terminal 1-49 amino acid sequence that could be cut down.

## Storage

**Storage:**

Store at -20°C. Stable for one year after shipment.

**Storage Buffer:**

PBS with 0.02% sodium azide and 50% glycerol pH 7.3.

Aliquoting is unnecessary for -20°C storage

For technical support and original validation data for this product please contact:

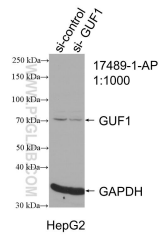
T: 4006900926

E: Proteintech-CN@ptglab.com

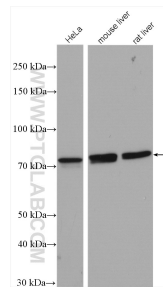
W: ptgcn.com

**This product is exclusively available under Proteintech Group brand and is not available to purchase from any other manufacturer.**

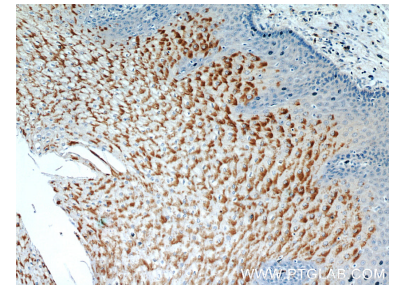
## Selected Validation Data



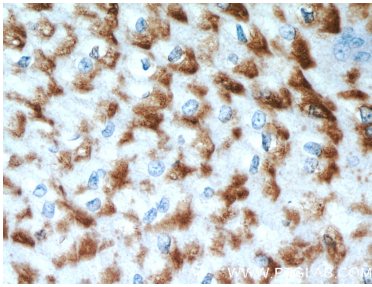
WB result of GUF1 antibody (17489-1-AP; 1:1000; incubated at room temperature for 1.5 hours) with sh-Control and sh-GUF1 transfected HepG2 cells.



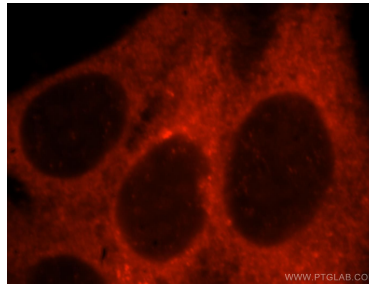
Various lysates were subjected to SDS PAGE followed by western blot with 17489-1-AP (GUF1 antibody) at dilution of 1:2000 incubated at room temperature for 1.5 hours.



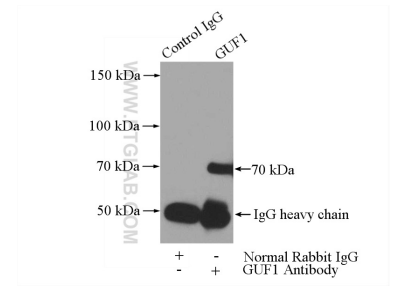
Immunohistochemical analysis of paraffin-embedded human oesophagus using 17489-1-AP (GUF1 antibody) at dilution of 1:50 (under 10x lens).



Immunohistochemical analysis of paraffin-embedded human oesophagus using 17489-1-AP (GUF1 antibody) at dilution of 1:50 (under 40x lens).



Immunofluorescent analysis of HepG2 cells, using GUF1 antibody 17489-1-AP at 1:25 dilution and Rhodamine-labeled goat anti-rabbit IgG (red).



IP result of anti-GUF1 (IP:17489-1-AP, 3ug; Detection:17489-1-AP 1:500) with HeLa cells lysate 3200ug.