

For Research Use Only

MDM1 Polyclonal antibody

Catalog Number: 17575-1-AP

Featured Product

1 Publications



Basic Information

Catalog Number: 17575-1-AP	GenBank Accession Number: BC028355	Purification Method: Antigen affinity purification
Size: 350 ug/ml	GeneID (NCBI): 56890	Recommended Dilutions: WB 1:500-1:2000 IHC 1:20-1:200 IF-P 1:50-1:500 IF/ICC 1:200-1:800
Source: Rabbit	UNIPROT ID: Q8TC05	
Isotype: IgG	Full Name: Mdm1 nuclear protein homolog (mouse)	
Immunogen Catalog Number: AG10514	Calculated MW: 81 kDa	
	Observed MW: 81 kDa	

Applications

Tested Applications: WB, IHC, IF/ICC, IF-P, ELISA	Positive Controls: WB : mouse retina tissue, Raji cells, rat retina tissue IHC : human brain tissue, IF-P : mouse eye tissue, IF/ICC : hTERT-RPE1 cells,
Cited Applications: WB	
Species Specificity: human, mouse, rat	
Cited Species: mouse	

Note-IHC: suggested antigen retrieval with TE buffer pH 9.0; (*) Alternatively, antigen retrieval may be performed with citrate buffer pH 6.0

Background Information

Mdm1 was upregulated during ciliogenesis in multiciliated tracheal epithelial cells and localized to centrioles and cilia when transfected into NIH/3T3 cells. Mdm1 is a microtubule-binding protein that inhibits centrosome duplication when overexpressed. Proteomic analysis revealed that Mdm1 was also detected in the mouse photoreceptor sensory cilium complex and the outer segment (OS) of photoreceptor cells in the retina, suggesting that Mdm1 might be involved in the regulation of the functions and structure of the centrosome, as well as cilia. (PMID: 36171205)

Notable Publications

Author	Pubmed ID	Journal	Application
Youlim Son	36171205	Cell Death Dis	WB

Storage

Storage:
Store at -20°C. Stable for one year after shipment.
Storage Buffer:
PBS with 0.02% sodium azide and 50% glycerol pH 7.3.
Aliquoting is unnecessary for -20°C storage

For technical support and original validation data for this product please contact:

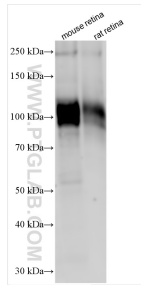
T: 4006900926

E: Proteintech-CN@ptglab.com

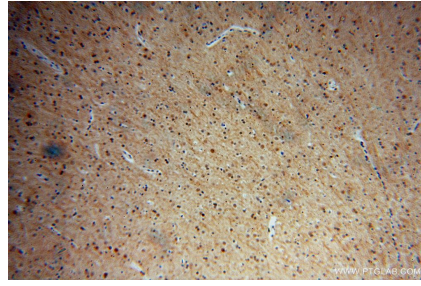
W: ptgcn.com

This product is exclusively available under Proteintech Group brand and is not available to purchase from any other manufacturer.

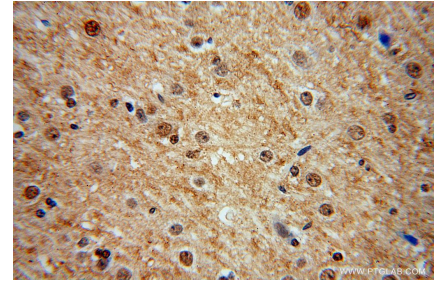
Selected Validation Data



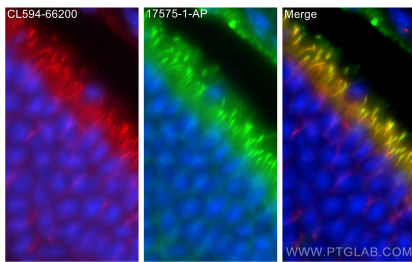
Various lysates were subjected to SDS PAGE followed by western blot with 17575-1-AP (MDM1 antibody) at dilution of 1:1000 incubated at room temperature for 1.5 hours.



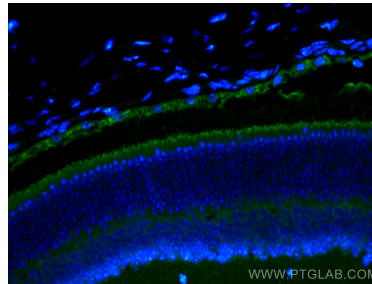
Immunohistochemical analysis of paraffin-embedded human brain using 17575-1-AP (MDM1 antibody) at dilution of 1:100 (under 10x lens).



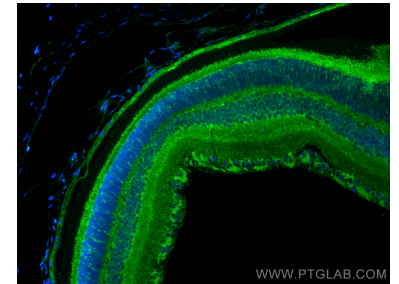
Immunohistochemical analysis of paraffin-embedded human brain using 17575-1-AP (MDM1 antibody) at dilution of 1:100 (under 40x lens).



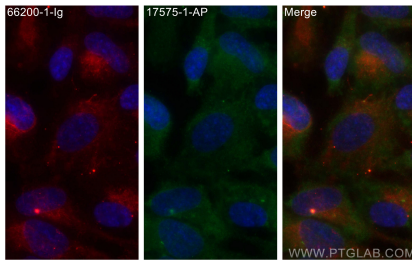
Immunofluorescent analysis of (4% PFA) fixed mouse eye tissue using MDM1 antibody (17575-1-AP) at dilution of 1:200 and CoraLite®488-Conjugated AffiniPure Goat Anti-Rabbit IgG(H+L), CoraLite®594 acetylated Tubulin(Lys40) antibody (CL594-66200, Clone: 7E5H8, red).



Immunofluorescent analysis of (4% PFA) fixed mouse eye tissue using MDM1 antibody (17575-1-AP) at dilution of 1:200 and CoraLite®488-Conjugated AffiniPure Goat Anti-Rabbit IgG(H+L), CoraLite®594 acetylated Tubulin(Lys40) antibody (CL594-66200, Clone: 7E5H8, red).



Immunofluorescent analysis of (4% PFA) fixed paraffin-embedded mouse eye tissue using MDM1 antibody (17575-1-AP) at dilution of 1:200 and CoraLite®488-Conjugated AffiniPure Goat Anti-Rabbit IgG(H+L). Heat mediated antigen retrieval with Tris-EDTA buffer (pH 9.0).



Immunofluorescent analysis of (-20°C Methanol) fixed hTERT-RPE1 cells using MDM1 antibody (17575-1-AP) at dilution of 1:400 and CoraLite®488-Conjugated AffiniPure Goat Anti-Rabbit IgG(H+L), acetylated Tubulin(Lys40) antibody (66200-1-Ig, Clone: 7E5H8, red).