

For Research Use Only

# DDX43 Polyclonal antibody

Catalog Number: 17591-1-AP **1 Publications**



## Basic Information

<b>Catalog Number:</b> 17591-1-AP	<b>GenBank Accession Number:</b> BC066938	<b>Purification Method:</b> Antigen affinity purification
<b>Size:</b> 550 µg/ml	<b>GeneID (NCBI):</b> 55510	<b>Recommended Dilutions:</b> WB 1:500-1:3000 IHC 1:20-1:200 IF/ICC 1:20-1:200
<b>Source:</b> Rabbit	<b>UNIPROT ID:</b> Q9NXZ2	
<b>Isotype:</b> IgG	<b>Full Name:</b> DEAD (Asp-Glu-Ala-Asp) box polypeptide 43	
<b>Immunogen Catalog Number:</b> AG11484	<b>Calculated MW:</b> 648 aa, 73 kDa	
	<b>Observed MW:</b> 73 kDa	

## Applications

<b>Tested Applications:</b> IF/ICC, IHC, WB, ELISA	<b>Positive Controls:</b>
<b>Species Specificity:</b> human, mouse, rat	<b>WB:</b> HeLa cells, A375 cells, HepG2 cells, PC-3 cells
<b>Note-IHC:</b> suggested antigen retrieval with <b>TE buffer pH 9.0; (*) Alternatively, antigen retrieval may be performed with citrate buffer pH 6.0</b>	<b>IHC:</b> human lung cancer tissue,
	<b>IF/ICC:</b> HepG2 cells,

## Background Information

### Notable Publications

Author	Pubmed ID	Journal	Application
Yasuto Akiyama	24573400	Oncol Rep	

## Storage

**Storage:**  
Store at -20°C. Stable for one year after shipment.  
**Storage Buffer:**  
PBS with 0.02% sodium azide and 50% glycerol pH 7.3.  
Aliquoting is unnecessary for -20°C storage

For technical support and original validation data for this product please contact:

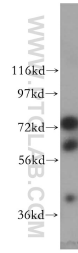
T: 4006900926

E: Proteintech-CN@ptglab.com

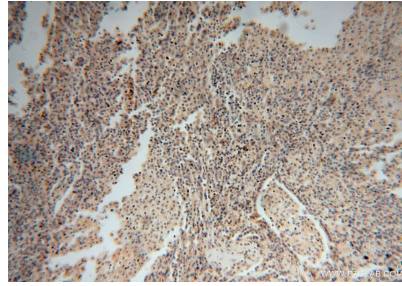
W: ptgcn.com

**This product is exclusively available under Proteintech Group brand and is not available to purchase from any other manufacturer.**

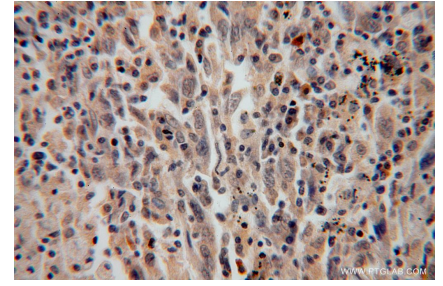
## Selected Validation Data



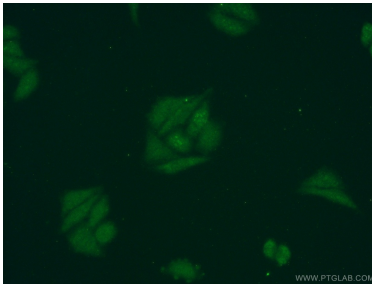
HeLa cells were subjected to SDS PAGE followed by western blot with 17591-1-AP (DDX43 antibody) at dilution of 1:800 incubated at room temperature for 1.5 hours.



Immunohistochemical analysis of paraffin-embedded human lung cancer using 17591-1-AP (DDX43 antibody) at dilution of 1:100 (under 10x lens).



Immunohistochemical analysis of paraffin-embedded human lung cancer using 17591-1-AP (DDX43 antibody) at dilution of 1:100 (under 40x lens).



Immunofluorescent analysis of HepG2 cells using 17591-1-AP (DDX43 antibody) at dilution of 1:50 and Alexa Fluor 488-conjugated AffiniPure Goat Anti-Rabbit IgG(H+L).