

For Research Use Only

RSPH3 Polyclonal antibody

Catalog Number: 17603-1-AP **10 Publications**



Basic Information

Catalog Number: 17603-1-AP	GenBank Accession Number: BC050604	Purification Method: Antigen affinity purification
Size: 900 µg/ml	GeneID (NCBI): 83861	Recommended Dilutions: WB 1:500-1:1000 IHC 1:20-1:200 IF/ICC 1:20-1:200
Source: Rabbit	UNIPROT ID: Q86UC2	
Isotype: IgG	Full Name: radial spoke 3 homolog (Chlamydomonas)	
Immunogen Catalog Number: AG11707	Calculated MW: 560 aa, 64 kDa	
	Observed MW: 70 kDa	

Applications

Tested Applications: WB, IHC, IF/ICC, ELISA	Positive Controls: WB : human brain tissue, NIH/3T3 cells IHC : human brain tissue, IF/ICC : NIH/3T3 cells,
Cited Applications: WB, ColP, IF	
Species Specificity: human, mouse, rat	
Cited Species: human, mouse	
Note-IHC: suggested antigen retrieval with TE buffer pH 9.0; (*) Alternatively, antigen retrieval may be performed with citrate buffer pH 6.0	

Background Information

Notable Publications

Author	Pubmed ID	Journal	Application
Xin Zhang	36417862	Cell Rep	IF
Huan Wu	32124190	J Assist Reprod Genet	IF
Yirong Zhang	30060180	J Mol Cell Biol	

Storage

Storage:
Store at -20°C. Stable for one year after shipment.
Storage Buffer:
PBS with 0.02% sodium azide and 50% glycerol pH 7.3.
Aliquoting is unnecessary for -20°C storage

For technical support and original validation data for this product please contact:

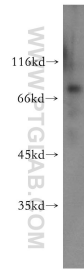
T: 4006900926

E: Proteintech-CN@ptglab.com

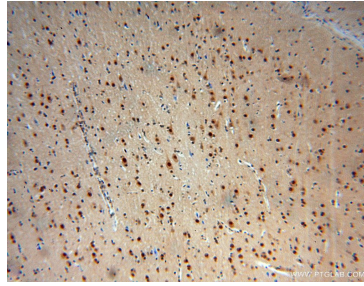
W: ptgcn.com

This product is exclusively available under Proteintech Group brand and is not available to purchase from any other manufacturer.

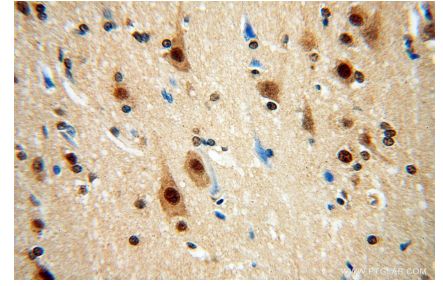
Selected Validation Data



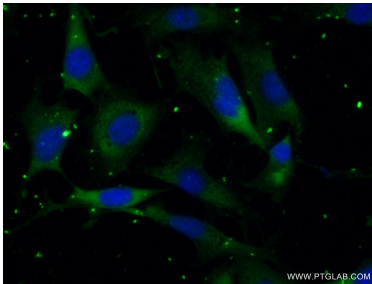
human brain tissue were subjected to SDS PAGE followed by western blot with 17603-1-AP (RSPH3 antibody) at dilution of 1:600 incubated at room temperature for 1.5 hours.



Immunohistochemical analysis of paraffin-embedded human brain using 17603-1-AP (RSPH3 antibody) at dilution of 1:50 (under 10x lens).



Immunohistochemical analysis of paraffin-embedded human brain using 17603-1-AP (RSPH3 antibody) at dilution of 1:50 (under 40x lens).



Immunofluorescent analysis of (-20°C Ethanol) fixed NIH/3T3 cells using 17603-1-AP (RSPH3 antibody) at dilution of 1:50 and Alexa Fluor 488-conjugated AffiniPure Goat Anti-Rabbit IgG(H+L).