

For Research Use Only

# UBE2J2 Polyclonal antibody

Catalog Number: 17713-1-AP **3 Publications**



## Basic Information

**Catalog Number:**

17713-1-AP

**Size:**

500 µg/ml

**Source:**

Rabbit

**Isotype:**

IgG

**Immunogen Catalog Number:**

AG12039

**GenBank Accession Number:**

BC094777

**GeneID (NCBI):**

118424

**UNIPROT ID:**

Q8N2K1

**Full Name:**

ubiquitin-conjugating enzyme E2, J2  
(UBC6 homolog, yeast)

**Calculated MW:**

259 aa, 29 kDa

**Observed MW:**

29 kDa

**Purification Method:**

Antigen affinity purification

**Recommended Dilutions:**

WB 1:200-1:1000

## Applications

**Tested Applications:**

WB, ELISA

**Cited Applications:**

WB

**Species Specificity:**

human, mouse, rat

**Cited Species:**

human

**Positive Controls:**

WB: mouse liver tissue,

## Background Information

### Notable Publications

Author	Pubmed ID	Journal	Application
Sandra Stefanovic-Barrett	29519897	EMBO Rep	WB
Cong Jiang	36528027	Mol Cell	WB
Melissa A Roberts	37494933	Dev Cell	WB

## Storage

**Storage:**

Store at -20°C. Stable for one year after shipment.

**Storage Buffer:**

PBS with 0.02% sodium azide and 50% glycerol pH 7.3.

Aliquoting is unnecessary for -20°C storage

For technical support and original validation data for this product please contact:

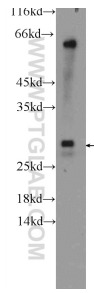
T: 4006900926

E: [Proteintech-CN@ptglab.com](mailto:Proteintech-CN@ptglab.com)

W: [ptgcn.com](http://ptgcn.com)

**This product is exclusively available under Proteintech Group brand and is not available to purchase from any other manufacturer.**

## Selected Validation Data



mouse liver tissue were subjected to SDS PAGE followed by western blot with 17713-1-AP (UBE2J2 Antibody) at dilution of 1:300 incubated at room temperature for 1.5 hours.