

For Research Use Only

ENOPH1 Polyclonal antibody

Catalog Number: 17731-1-AP **1 Publications**



Basic Information

Catalog Number: 17731-1-AP	GenBank Accession Number: BC065815	Purification Method: Antigen affinity purification
Size: 260 µg/ml	GeneID (NCBI): 58478	Recommended Dilutions: WB 1:500-1:3000 IHC 1:50-1:500 IF/ICC 1:50-1:500
Source: Rabbit	UNIPROT ID: Q9UHY7	
Isotype: IgG	Full Name: enolase-phosphatase 1	
Immunogen Catalog Number: AG12131	Calculated MW: 261 aa, 29 kDa	
	Observed MW: 29-35 kDa	

Applications

Tested Applications: WB, IHC, IF/ICC, ELISA	Positive Controls: WB : HL-60 cells, K-562 cells, L02 cells, mouse liver tissue, rat liver tissue
Cited Applications: WB	IHC : human liver cancer tissue, human colon cancer tissue
Species Specificity: human, mouse, rat	IF/ICC : U-251 cells,
Cited Species: mouse	
Note-IHC: suggested antigen retrieval with TE buffer pH 9.0; (*) Alternatively, antigen retrieval may be performed with citrate buffer pH 6.0	

Background Information

ENOPH1, also named as MASA and MSTP145, belongs to the HAD-like hydrolase superfamily and MasA/MtnC family. ENOPH1 is a newly identified enzyme involved in L-methionine biosynthesis, which is associated with anxiety and depression. Studies have shown that ENOPH1 plays a crucial role in promoting the proliferation and migration of glioma cells (PMID: 32654229). ENOPH1 has 2 isoforms with the molecular mass of 13 and 29 kDa.

Notable Publications

Author	Pubmed ID	Journal	Application
Dexin Yang	37075968	Exp Neurol	WB

Storage

Storage:
Store at -20°C. Stable for one year after shipment.
Storage Buffer:
PBS with 0.02% sodium azide and 50% glycerol pH 7.3.
Aliquoting is unnecessary for -20°C storage

For technical support and original validation data for this product please contact:

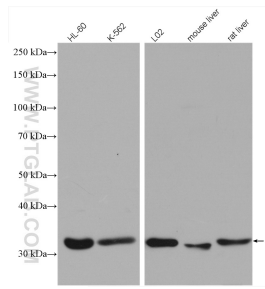
T: 4006900926

E: Proteintech-CN@ptglab.com

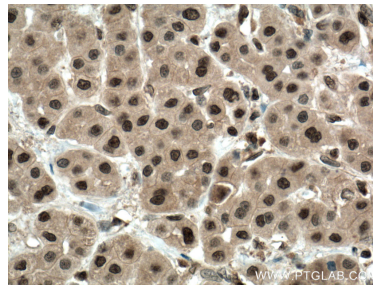
W: ptgcn.com

This product is exclusively available under Proteintech Group brand and is not available to purchase from any other manufacturer.

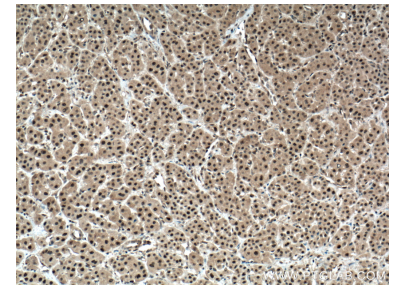
Selected Validation Data



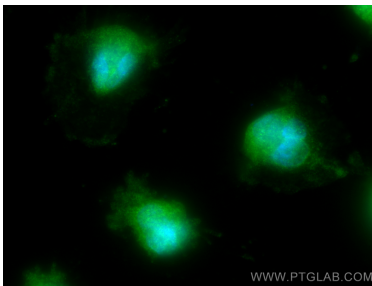
Various lysates were subjected to SDS PAGE followed by western blot with 17731-1-AP (ENOPH1 antibody) at dilution of 1:1500 incubated at room temperature for 1.5 hours.



Immunohistochemical analysis of paraffin-embedded human liver cancer tissue slide using 17731-1-AP (ENOPH1 antibody) at dilution of 1:200 (under 40x lens. Heat mediated antigen retrieval with Tris-EDTA buffer (pH 9.0)).



Immunohistochemical analysis of paraffin-embedded human liver cancer tissue slide using 17731-1-AP (ENOPH1 antibody) at dilution of 1:200 (under 10x lens. Heat mediated antigen retrieval with Tris-EDTA buffer (pH 9.0)).



Immunofluorescent analysis of (-20°C Methanol) fixed U-251 cells using ENOPH1 antibody (17731-1-AP) at dilution of 1:200 and CoraLite®488-Conjugated AffiniPure Goat Anti-Rabbit IgG(H+L).