

For Research Use Only

# MMP3 Polyclonal antibody

Catalog Number:17873-1-AP

Featured Product

237 Publications



## Basic Information

**Catalog Number:**

17873-1-AP

**Concentration:**

550 ug/ml

**Source:**

Rabbit

**Isotype:**

IgG

**Immunogen Catalog Number:**

AG12359

**GenBank Accession Number:**

BC074869

**GeneID (NCBI):**

4314

**UNIPROT ID:**

P08254

**Full Name:**

matrix metalloproteinase 3  
(stromelysin 1, progelatinase)

**Calculated MW:**

477 aa, 54 kDa

**Observed MW:**

45-60 kDa

**Purification Method:**

Antigen affinity purification

**Recommended Dilutions:**

WB 1:500-1:2000

IHC 1:20-1:200

IF/ICC 1:200-1:800

## Applications

**Tested Applications:**

WB, IHC, IF/ICC, ELISA

**Cited Applications:**

WB, IHC, IF

**Species Specificity:**

human, rat

**Cited Species:**

human, mouse, rat, pig, rabbit, bovine

**Note-IHC: suggested antigen retrieval with TE buffer pH 9.0; (\*) Alternatively, antigen retrieval may be performed with citrate buffer pH 6.0**

**Positive Controls:**

WB : A2780 cells, A549 cells, HeLa cells, human skeletal muscle tissue, U-87 MG cells, PC-12 cells

IHC : human breast cancer tissue, human stomach cancer tissue

IF/ICC : A549 cells,

## Background Information

Matrix metalloproteinases (MMPs) play a critically important role in extracellular matrix remodeling and have been implicated in a number of key normal and pathologic processes. These proteases have come to represent important therapeutic and diagnostic targets for the treatment and detection of human cancers. MMP-3 activate procollagenase via two pathways: slow direct activation and rapid activation in conjunction with tissue or plasma proteinases. The pro-MMP3 (60 kDa) and the active MMP3 (47 kDa) can be detected through western blot.

## Notable Publications

Author	Pubmed ID	Journal	Application
Chun-Na Lan	34590154	Mol Med Rep	WB
Yitong Zhao	36156740	J Bone Miner Metab	WB
Xinghuo Wu	31554783	Exp Mol Med	WB

## Storage

**Storage:**

Store at -20°C. Stable for one year after shipment.

**Storage Buffer:**

PBS with 0.02% sodium azide and 50% glycerol, pH7.3

Aliquoting is unnecessary for -20°C storage

For technical support and original validation data for this product please contact:

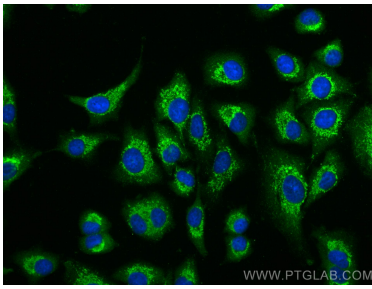
T: 4006900926

E: Proteintech-CN@ptglab.com

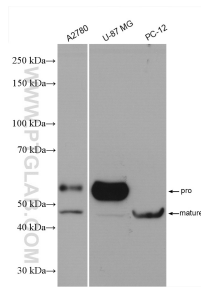
W: ptgcn.com

**This product is exclusively available under Proteintech Group brand and is not available to purchase from any other manufacturer.**

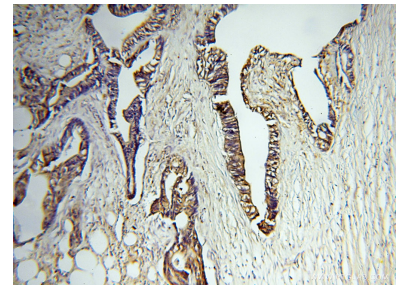
## Selected Validation Data



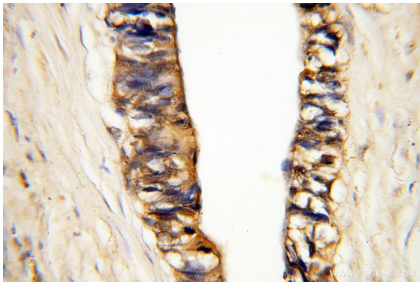
Immunofluorescent analysis of (-20°C Methanol) fixed A549 cells using MMP3 antibody (17873-1-AP) at dilution of 1:400 and CoraLite®488-Conjugated AffiniPure Goat Anti-Rabbit IgG(H+L).



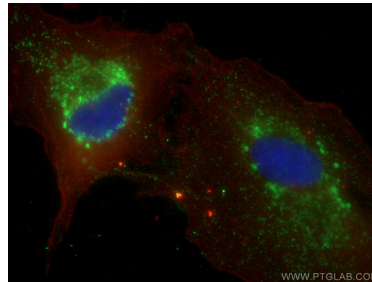
Various lysates were subjected to SDS PAGE followed by western blot with 17873-1-AP (MMP3 antibody) at dilution of 1:1000 incubated at room temperature for 1.5 hours.



Immunohistochemical analysis of paraffin-embedded human breast cancer using 17873-1-AP (MMP3 antibody) at dilution of 1:100 (under 10x lens).



Immunohistochemical analysis of paraffin-embedded human breast cancer using 17873-1-AP (MMP3 antibody) at dilution of 1:100 (under 40x lens).



Immunofluorescent analysis of (-20°C Methanol) fixed A549 cells using MMP3 antibody (17873-1-AP) at dilution of 1:800 and CoraLite®488-Conjugated AffiniPure Goat Anti-Rabbit IgG(H+L), CoraLite®594 Beta Actin antibody (CL594-66009, Clone: 2D4H5, red).