

For Research Use Only

# NDUFA11 Polyclonal antibody

Catalog Number: 17879-1-AP **1 Publications**



## Basic Information

**Catalog Number:**

17879-1-AP

**Size:**

500 µg/ml

**Source:**

Rabbit

**Isotype:**

IgG

**Immunogen Catalog Number:**

AG11746

**GenBank Accession Number:**

BC069045

**GeneID (NCBI):**

126328

**UNIPROT ID:**

Q86Y39

**Full Name:**

NADH dehydrogenase (ubiquinone) 1  
alpha subcomplex, 11, 14.7kDa

**Calculated MW:**

141 aa, 15 kDa

**Observed MW:**

10-15 kDa

**Purification Method:**

Antigen affinity purification

**Recommended Dilutions:**

WB 1:1000-1:8000

## Applications

**Tested Applications:**

WB, ELISA

**Cited Applications:**

WB

**Species Specificity:**

human

**Cited Species:**

human

**Positive Controls:**

WB : HeLa cells, MDA-MB-231 cells, RT-4 cells, U-251 cells

## Background Information

Mitochondrial complex I is assembled from 44 subunits into an L-shaped complex, with a hydrophobic arm embedded in the inner mitochondrial membrane and the other arm protruding into the mitochondrial matrix. NDUFA11 encodes a subunit of the membrane-bound mitochondrial complex I, and functions in assembly, stability, and regulation of the complex. Mutations in NDUFA11 are associated with severe mitochondrial complex I deficiency (PMID: 18306244).

## Notable Publications

Author	Pubmed ID	Journal	Application
Wei Mao	34639006	Int J Mol Sci	WB

## Storage

**Storage:**

Store at -20°C. Stable for one year after shipment.

**Storage Buffer:**

PBS with 0.02% sodium azide and 50% glycerol pH 7.3.

Aliquoting is unnecessary for -20°C storage

For technical support and original validation data for this product please contact:

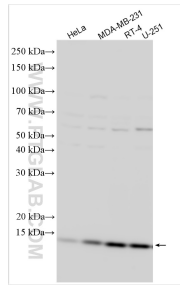
T: 4006900926

E: Proteintech-CN@ptglab.com

W: ptgcn.com

**This product is exclusively available under Proteintech Group brand and is not available to purchase from any other manufacturer.**

## Selected Validation Data



HeLa cells were subjected to SDS PAGE followed by western blot with 17879-1-AP (NDUFA11 antibody) at dilution of 1:4000 incubated at room temperature for 1.5 hours.