

For Research Use Only

# SLTM Polyclonal antibody

Catalog Number: 17889-1-AP



## Basic Information

<b>Catalog Number:</b> 17889-1-AP	<b>GenBank Accession Number:</b> BC046119	<b>Purification Method:</b> Antigen affinity purification
<b>Size:</b> 550 µg/ml	<b>GeneID (NCBI):</b> 79811	<b>Recommended Dilutions:</b> WB 1:500-1:2000 IF 1:10-1:100
<b>Source:</b> Rabbit	<b>UNIPROT ID:</b> Q9NWH9	
<b>Isotype:</b> IgG	<b>Full Name:</b> SAFB-like, transcription modulator	
<b>Immunogen Catalog Number:</b> AG12060	<b>Calculated MW:</b> 478aa,57 kDa; 1034aa,117 kDa	
	<b>Observed MW:</b> 135-140 kDa	

## Applications

<b>Tested Applications:</b> IF/ICC, WB,ELISA	<b>Positive Controls:</b> WB : mouse brain tissue, HeLa cells IF : HepG2 cells,
<b>Species Specificity:</b> human, mouse, rat	

## Background Information

SLTM, also named as Modulator of estrogen-induced transcription, is a 1034 amino acid protein, which localizes in the nucleus. When it is overexpressed, SLTM acts as a general inhibitor of transcription that eventually leads to apoptosis. The calculated molecular weight of SLTM is 117 kDa, but modified SLTM is about 135-140 kDa.

## Storage

**Storage:**  
Store at -20°C. Stable for one year after shipment.  
**Storage Buffer:**  
PBS with 0.02% sodium azide and 50% glycerol pH 7.3.  
Aliquoting is unnecessary for -20°C storage

For technical support and original validation data for this product please contact:

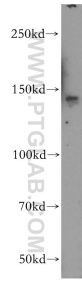
T: 4006900926

E: [Proteintech-CN@ptglab.com](mailto:Proteintech-CN@ptglab.com)

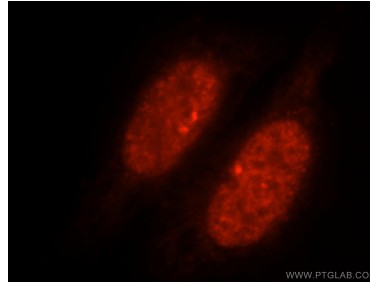
W: [ptgcn.com](http://ptgcn.com)

This product is exclusively available under Proteintech Group brand and is not available to purchase from any other manufacturer.

## Selected Validation Data



mouse brain tissue were subjected to SDS PAGE followed by western blot with 17889-1-AP (SLTM antibody) at dilution of 1:500 incubated at room temperature for 1.5 hours.



Immunofluorescent analysis of HepG2 cells, using SLTM antibody 17889-1-AP at 1:25 dilution and Rhodamine-labeled goat anti-rabbit IgG (red).