

For Research Use Only

# CREBL2 Polyclonal antibody

Catalog Number: 18007-1-AP



## Basic Information

Catalog Number:

18007-1-AP

Size:

500 µg/ml

Source:

Rabbit

Isotype:

IgG

Immunogen Catalog Number:

AG12504

GenBank Accession Number:

BC106052

GeneID (NCBI):

1389

UNIPROT ID:

O60519

Full Name:

cAMP responsive element binding protein-like 2

Calculated MW:

120 aa, 14 kDa

Observed MW:

17 kDa

Purification Method:

Antigen affinity purification

Recommended Dilutions:

WB 1:500-1:1000

## Applications

Tested Applications:

WB, ELISA

Species Specificity:

human, mouse, rat

Positive Controls:

WB: human liver tissue, mouse liver tissue

## Background Information

### Storage

Storage:

Store at -20°C. Stable for one year after shipment.

Storage Buffer:

PBS with 0.02% sodium azide and 50% glycerol pH 7.3.

Aliquoting is unnecessary for -20°C storage

For technical support and original validation data for this product please contact:

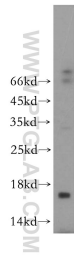
T: 4006900926

E: [Proteintech-CN@ptglab.com](mailto:Proteintech-CN@ptglab.com)

W: [ptgcn.com](http://ptgcn.com)

This product is exclusively available under Proteintech Group brand and is not available to purchase from any other manufacturer.

## Selected Validation Data



human liver tissue were subjected to SDS PAGE followed by western blot with 18007-1-AP (CREBL2 antibody) at dilution of 1:500 incubated at room temperature for 1.5 hours.