

For Research Use Only

BOLA1 Polyclonal antibody

Catalog Number: 18017-1-AP **2 Publications**



Basic Information

Catalog Number:

18017-1-AP

Size:

600 µg/ml

Source:

Rabbit

Isotype:

IgG

Immunogen Catalog Number:

AG12565

GenBank Accession Number:

BC063405

GeneID (NCBI):

51027

UNIPROT ID:

Q9Y3E2

Full Name:

bolA homolog 1 (E. coli)

Calculated MW:

137 aa, 14 kDa

Observed MW:

14 kDa

Purification Method:

Antigen affinity purification

Recommended Dilutions:

WB 1:500-1:2000

IP 0.5-4.0 µg for 1.0-3.0 mg of total protein lysate

IHC 1:20-1:200

IF/ICC 1:20-1:200

Applications

Tested Applications:

IF/ICC, IHC, IP, WB, ELISA

Cited Applications:

WB

Species Specificity:

human, mouse, rat

Cited Species:

human, mouse

Note-IHC: suggested antigen retrieval with TE buffer pH 9.0; (*) Alternatively, antigen retrieval may be performed with citrate buffer pH 6.0

Positive Controls:

WB : HEK-293 cells, HepG2 cells

IP : HepG2 cells,

IHC : human lung tissue, human heart tissue, human kidney tissue, human spleen tissue

IF/ICC : HepG2 cells,

Background Information

Notable Publications

Author	Pubmed ID	Journal	Application
Dong Wang	36017386	Biomed Res Int	WB
Sajan C Achi	38746404	bioRxiv	WB

Storage

Storage:

Store at -20°C. Stable for one year after shipment.

Storage Buffer:

PBS with 0.02% sodium azide and 50% glycerol pH 7.3.

Aliquoting is unnecessary for -20°C storage

For technical support and original validation data for this product please contact:

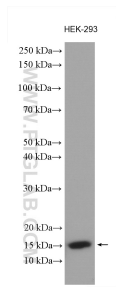
T: 4006900926

E: Proteintech-CN@ptglab.com

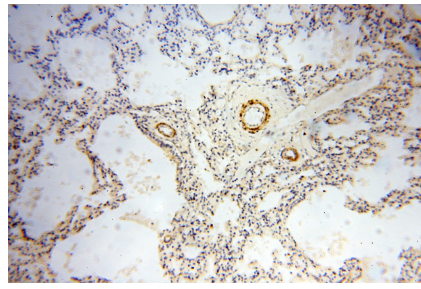
W: ptgcn.com

This product is exclusively available under Proteintech Group brand and is not available to purchase from any other manufacturer.

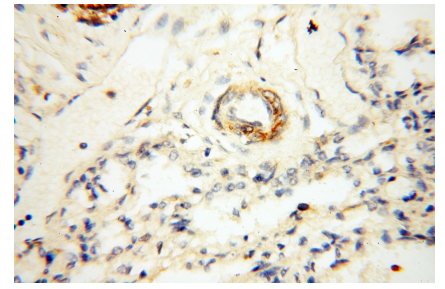
Selected Validation Data



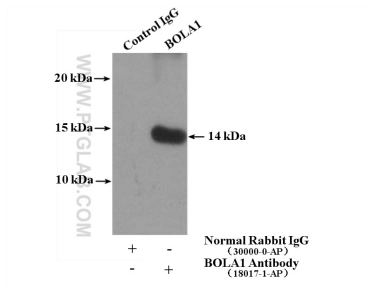
HEK-293 cells were subjected to SDS PAGE followed by western blot with 18017-1-AP (BOLA1 antibody) at dilution of 1:1000 incubated at room temperature for 1.5 hours.



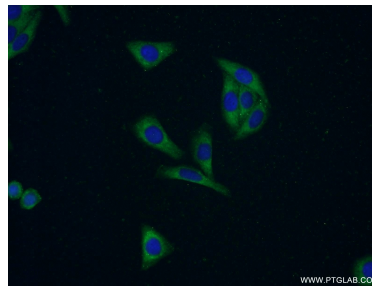
Immunohistochemical analysis of paraffin-embedded human lung using 18017-1-AP (BOLA1 antibody) at dilution of 1:100 (under 10x lens).



Immunohistochemical analysis of paraffin-embedded human lung using 18017-1-AP (BOLA1 antibody) at dilution of 1:100 (under 40x lens).



IP result of anti-BOLA1 (IP:18017-1-AP, 4ug; Detection:18017-1-AP 1:800) with HepG2 cells lysate 3480ug.



Immunofluorescent analysis of HepG2 cells using 18017-1-AP (BOLA1 antibody) at dilution of 1:50 and Alexa Fluor 488-conjugated AffiniPure Goat Anti-Rabbit IgG(H+L).