

For Research Use Only

DNA Ligase I Polyclonal antibody

Catalog Number: 18051-1-AP

Featured Product

12 Publications



Basic Information

Catalog Number:

18051-1-AP

Size:

500 µg/ml

Source:

Rabbit

Isotype:

IgG

Immunogen Catalog Number:

AG12508

GenBank Accession Number:

BC108318

GeneID (NCBI):

3978

UNIPROT ID:

P18858

Full Name:

ligase I, DNA, ATP-dependent

Calculated MW:

919 aa, 102 kDa

Observed MW:

130 kDa

Purification Method:

Antigen affinity purification

Recommended Dilutions:

WB 1:500-1:2000

IP 0.5-4.0 µg for 1.0-3.0 mg of total protein lysate

IHC 1:20-1:200

Applications

Tested Applications:

IHC, IP, WB, ELISA

Cited Applications:

WB, IP, IHC, CoIP

Species Specificity:

human, mouse, rat

Cited Species:

human, rat, mouse

Note-IHC: suggested antigen retrieval with TE buffer pH 9.0; (*) Alternatively, antigen retrieval may be performed with citrate buffer pH 6.0

Positive Controls:

WB : HeLa cells, A431 cells, Jurkat cells

IP : HepG2 cells,

IHC : human spleen tissue, human brain tissue, human placenta tissue, human testis tissue

Background Information

DNA ligase I (LIG1) joins DNA strand breaks during DNA replication and repair transactions and contributes to genome integrity. 18051-1-AP is raised against the C-terminal 670-919 aa residues of the human DNA ligase 1.

Notable Publications

Author	Pubmed ID	Journal	Application
Robert M Vaughan	33097091	Epigenetics Chromatin	WB
Yuangao Wang	34671165	Nature	WB
Patrick Maffucci	30395541	J Clin Invest	WB,IP

Storage

Storage:

Store at -20°C. Stable for one year after shipment.

Storage Buffer:

PBS with 0.02% sodium azide and 50% glycerol pH 7.3.

Aliquoting is unnecessary for -20°C storage

For technical support and original validation data for this product please contact:

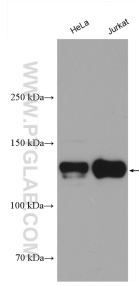
T: 4006900926

E: Proteintech-CN@ptglab.com

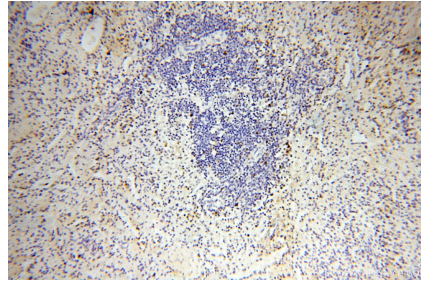
W: ptgcn.com

This product is exclusively available under Proteintech Group brand and is not available to purchase from any other manufacturer.

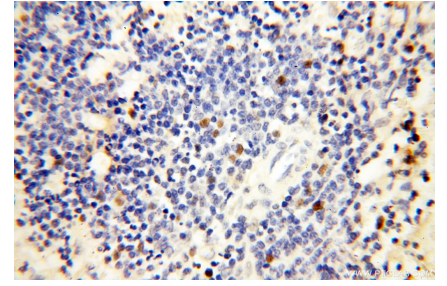
Selected Validation Data



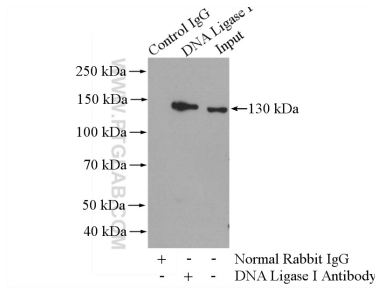
Various lysates were subjected to SDS PAGE followed by western blot with 18051-1-AP (DNA Ligase I antibody) at dilution of 1:1000 incubated at room temperature for 1.5 hours.



Immunohistochemical analysis of paraffin-embedded human spleen using 18051-1-AP (DNA Ligase I antibody) at dilution of 1:100 (under 10x lens).



Immunohistochemical analysis of paraffin-embedded human spleen using 18051-1-AP (DNA Ligase I antibody) at dilution of 1:100 (under 40x lens).



IP result of anti-DNA Ligase I (IP:18051-1-AP, 4ug; Detection:18051-1-AP 1:500) with HepG2 cells lysate 3200ug.