

For Research Use Only

# ALDOB Polyclonal antibody

Catalog Number: 18065-1-AP

Featured Product

30 Publications



## Basic Information

**Catalog Number:**

18065-1-AP

**Size:**

550 µg/ml

**Source:**

Rabbit

**Isotype:**

IgG

**Immunogen Catalog Number:**

AG12695

**GenBank Accession Number:**

BC029399

**GeneID (NCBI):**

229

**UNIPROT ID:**

P05062

**Full Name:**

aldolase B, fructose-bisphosphate

**Calculated MW:**

316 aa, 35 kDa

**Observed MW:**

35-40 kDa

**Purification Method:**

Antigen affinity purification

**Recommended Dilutions:**

WB 1:2000-1:16000

IP 0.5-4.0 µg for 1.0-3.0 mg of total protein lysate

IHC 1:50-1:500

## Applications

**Tested Applications:**

IHC, IP, WB, ELISA

**Cited Applications:**

WB, IP, IF, IHC

**Species Specificity:**

human, mouse, rat

**Cited Species:**

human, rat, mouse

**Note-IHC: suggested antigen retrieval with TE buffer pH 9.0; (\*) Alternatively, antigen retrieval may be performed with citrate buffer pH 6.0**

**Positive Controls:**

WB : mouse kidney tissue, mouse liver tissue, mouse brain tissue, Raji cells, mouse skeletal muscle tissue, rat kidney tissue

IP : mouse brain tissue, mouse kidney tissue

IHC : human liver cancer tissue,

## Background Information

Fructose-1,6-bisphosphate aldolase is a glycolytic enzyme that catalyzes the reversible conversion of fructose-1,6-bisphosphate to glyceraldehyde 3-phosphate and dihydroxyacetone phosphate. Vertebrates have 3 aldolase isozymes, aldolase A (ALDOA), B (ALDOB), and C (ALDOC). Deficiency of this enzyme ALDOB causes an accumulation of fructose-1-phosphate after fructose intake, which results in toxic symptoms like vomiting, hypoglycemia, jaundice, elevated liver enzymes and hepatomegaly (PMID:22375183). This antibody may detect ALDOA.

## Notable Publications

Author	Pubmed ID	Journal	Application
Chang Zhao	31548586	Sci Rep	WB
Felicia Gerst	30202879	J Clin Endocrinol Metab	
Hao-Long Zeng	29254222	Oncotarget	WB

## Storage

**Storage:**

Store at -20°C. Stable for one year after shipment.

**Storage Buffer:**

PBS with 0.02% sodium azide and 50% glycerol pH 7.3.

Aliquoting is unnecessary for -20°C storage

For technical support and original validation data for this product please contact:

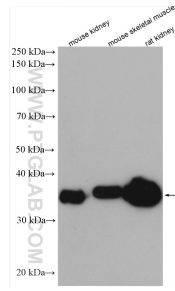
T: 4006900926

E: Proteintech-CN@ptglab.com

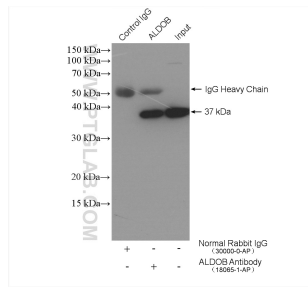
W: ptgcn.com

This product is exclusively available under Proteintech Group brand and is not available to purchase from any other manufacturer.

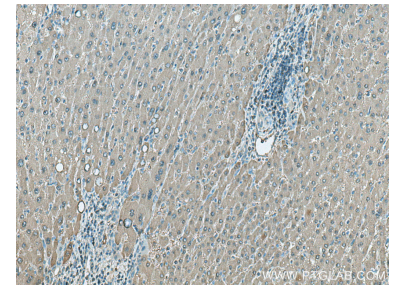
## Selected Validation Data



Various lysates were subjected to SDS PAGE followed by western blot with 18065-1-AP (ALDOB antibody) at dilution of 1:8000 incubated at room temperature for 1.5 hours.



IP result of anti-ALDOB (IP:18065-1-AP, 4ug; Detection:18065-1-AP 1:500) with mouse brain tissue lysate 2400 ug.



Immunohistochemical analysis of paraffin-embedded human liver cancer tissue slide using 18065-1-AP (ALDOB antibody) at dilution of 1:200 (under 10x lens). Heat mediated antigen retrieval with Tris-EDTA buffer (pH 9.0).