

For Research Use Only

# PLA2G4E Polyclonal antibody

Catalog Number:18088-1-AP

Featured Product

6 Publications



## Basic Information

**Catalog Number:**

18088-1-AP

**Size:**

1000 µg/ml

**Source:**

Rabbit

**Isotype:**

IgG

**Immunogen Catalog Number:**

AG12808

**GenBank Accession Number:**

BC101584

**GeneID (NCBI):**

123745

**UNIPROT ID:**

Q3MJ16

**Full Name:**

phospholipase A2, group IVE

**Calculated MW:**

868 aa, 99 kDa

**Observed MW:**

99 kDa, 57 kDa

**Purification Method:**

Antigen affinity purification

**Recommended Dilutions:**

WB 1:500-1:2000

IHC 1:20-1:200

## Applications

**Tested Applications:**

WB, IHC, ELISA

**Cited Applications:**

WB, IHC, IF

**Species Specificity:**

human, mouse, rat

**Cited Species:**

human, mouse

**Note-IHC: suggested antigen retrieval with TE buffer pH 9.0; (\*) Alternatively, antigen retrieval may be performed with citrate buffer pH 6.0**

**Positive Controls:**

**WB:** SH-SY5Y cells, SW 1990 cells, mouse thymus tissue

**IHC:** human skeletal muscle tissue, human heart tissue

## Background Information

PLA2G4E (Phospholipase A2 group IVE), also known as cPLA2-epsilon. Calcium-dependent N-acyltransferase is involved in the biosynthesis of N-acyl ethanolamines (NAEs) in the brain (PMID:29447909). Transfers the sn-1 fatty acyl chain of phosphatidylcholine (fatty acyl donor) to the amine group of phosphatidylethanolamine (fatty acyl acceptor) to generate N-acyl phosphatidylethanolamine (NAPE). Similarly can use plasmenylethanolamine as a fatty acyl acceptor to form N-acyl plasmenylethanolamine (N-Acyl-PlsEt). Both NAPE and N-Acyl-PlsEt can serve as precursors of bioactive NAEs like N-arachidonoyl phosphatidylethanolamine also called anandamide (PMID:29447909; 30517655).

## Notable Publications

Author	Pubmed ID	Journal	Application
Marta Pérez-González	32380223	Prog Neurobiol	WB,IHC,IF
Haojie Zhang	36609266	J Neuroinflammation	WB
Junsheng Lou	34872436	Autophagy	WB

## Storage

**Storage:**

Store at -20°C. Stable for one year after shipment.

**Storage Buffer:**

PBS with 0.02% sodium azide and 50% glycerol pH 7.3.

Aliquoting is unnecessary for -20°C storage

For technical support and original validation data for this product please contact:

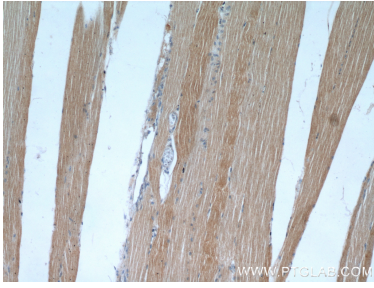
T: 4006900926

E: Proteintech-CN@ptglab.com

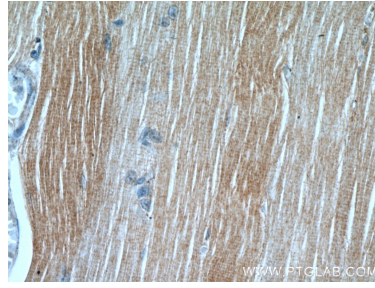
W: ptgcn.com

**This product is exclusively available under Proteintech Group brand and is not available to purchase from any other manufacturer.**

## Selected Validation Data



Immunohistochemical analysis of paraffin-embedded human skeletal muscle using 18088-1-AP (PLA2G4E antibody) at dilution of 1:50 (under 10x lens).



Immunohistochemical analysis of paraffin-embedded human skeletal muscle using 18088-1-AP (PLA2G4E antibody) at dilution of 1:50 (under 40x lens).