

For Research Use Only

# PHACTR3 Polyclonal antibody

Catalog Number:18107-1-AP



## Basic Information

**Catalog Number:**

18107-1-AP

**Size:**

1000 ug/ml

**Source:**

Rabbit

**Isotype:**

IgG

**Immunogen Catalog Number:**

AG12486

**GenBank Accession Number:**

BC108303

**GeneID (NCBI):**

116154

**UNIPROT ID:**

Q96KR7

**Full Name:**

phosphatase and actin regulator 3

**Calculated MW:**

559 aa, 63 kDa

**Observed MW:**

60 kDa and 75 kDa

**Purification Method:**

Antigen affinity purification

**Recommended Dilutions:**

IP 0.5-4.0 ug for 1.0-3.0 mg of total protein lysate

## Applications

**Tested Applications:**

IP, ELISA

**Species Specificity:**

human

**Positive Controls:**

IP : HL-60 cells,

## Background Information

PHACTR3 was originally named as the nuclear scaffold-associated PP1-inhibiting protein (Scapinin), which is found in the nuclear insoluble fraction of the leukemia cell line HL-60. However, PHACTR3 is distributed to the plasma membrane in adherent cells, and it enhances cell migration (PMID: 25405772). In humans, there are two PHACTR3 isoforms that are 75 kDa and 60 kDa, respectively (PMID: 32423795).

## Storage

**Storage:**

Store at -20°C. Stable for one year after shipment.

**Storage Buffer:**

PBS with 0.02% sodium azide and 50% glycerol pH 7.3.

Aliquoting is unnecessary for -20°C storage

For technical support and original validation data for this product please contact:

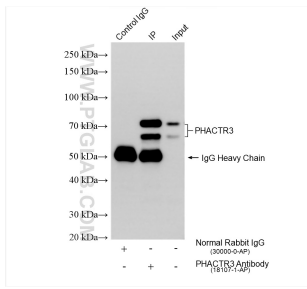
T: 4006900926

E: [Proteintech-CN@ptglab.com](mailto:Proteintech-CN@ptglab.com)

W: [ptgcn.com](http://ptgcn.com)

**This product is exclusively available under Proteintech Group brand and is not available to purchase from any other manufacturer.**

## Selected Validation Data



IP result of anti-PHACTR3 (IP:18107-1-AP, 4ug;  
Detection:18107-1-AP 1:1500) with HL-60 cells  
lysate 2240 ug.