

For Research Use Only

# MSH6 Polyclonal antibody

Catalog Number: 18120-1-AP

Featured Product

7 Publications



## Basic Information

**Catalog Number:**

18120-1-AP

**Size:**

260 µg/ml

**Source:**

Rabbit

**Isotype:**

IgG

**Immunogen Catalog Number:**

AG12645

**GenBank Accession Number:**

BC004246

**GeneID (NCBI):**

2956

**UNIPROT ID:**

P52701

**Full Name:**

mutS homolog 6 (E. coli)

**Calculated MW:**

153 kDa

**Observed MW:**

150-160 kDa

**Purification Method:**

Antigen affinity purification

**Recommended Dilutions:**

WB 1:500-1:3000

IP 0.5-4.0 µg for 1.0-3.0 mg of total protein lysate

IHC 1:50-1:500

IF 1:10-1:100

## Applications

**Tested Applications:**

FC, IF/ICC, IHC, IP, WB, ELISA

**Cited Applications:**

WB, IP, IHC

**Species Specificity:**

human, mouse, rat

**Cited Species:**

human, mouse

**Note-IHC: suggested antigen retrieval with TE buffer pH 9.0; (\*) Alternatively, antigen retrieval may be performed with citrate buffer pH 6.0**

**Positive Controls:**

WB : HEK-293 cells, HEK-293

IP : HEK-293 cells,

IHC : human colon tissue,

IF : HeLa cells,

## Background Information

MSH6, also named as DNA mismatch repair protein Msh6 or GTMBP, is a 1360 amino acid protein, which contains one PWWP domain and belongs to the DNA mismatch repair MutS family. MSH6 localizes in the nucleus and is a component of the post-replicative DNA mismatch repair system. Msh2 and Msh6 form a protein complex required to repair mismatches generated during DNA replication.

## Notable Publications

Author	Pubmed ID	Journal	Application
Etsuko Yokota	29262545	Oncotarget	WB
Ying Shi	33181035	DNA Cell Biol	WB
Xuting Ran	35664732	Front Oncol	IHC

## Storage

**Storage:**

Store at -20°C. Stable for one year after shipment.

**Storage Buffer:**

PBS with 0.02% sodium azide and 50% glycerol pH 7.3.

Aliquoting is unnecessary for -20°C storage

For technical support and original validation data for this product please contact:

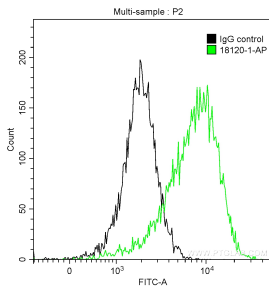
T: 4006900926

E: Proteintech-CN@ptglab.com

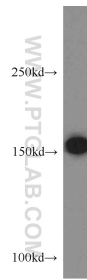
W: ptgcn.com

This product is exclusively available under Proteintech Group brand and is not available to purchase from any other manufacturer.

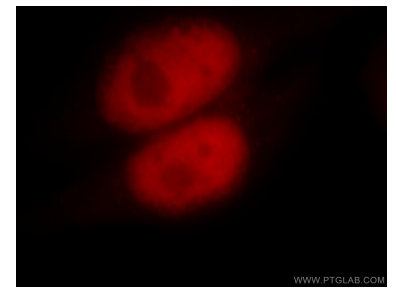
## Selected Validation Data



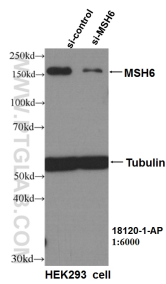
1X10<sup>6</sup> HEK-293 cells were intracellularly stained with 0.2 ug Anti-Human MSH6 (18120-1-AP) and CoraLite®488-Conjugated AffiniPure Goat Anti-Rabbit IgG(H+L) at dilution 1:1000 (green), and 0.2 ug Control Antibody. Cells were fixed with 4% PFA and permeabilized with 0.1% TritonX-100.



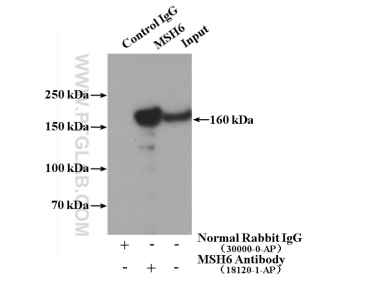
HEK-293 cells were subjected to SDS PAGE followed by western blot with 18120-1-AP (MSH6 antibody) at dilution of 1:500 incubated at room temperature for 1.5 hours.



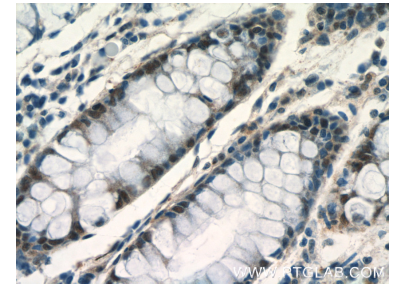
Immunofluorescent analysis of Hela cells, using MSH6 antibody 18120-1-AP at 1:25 dilution and Rhodamine-labeled goat anti-rabbit IgG (red).



WB result of MSH6 antibody (18120-1-AP, 1:6000) with si-Control and si-MSH6 transfected HEK293 cells.



IP result of anti-MSH6 (IP:18120-1-AP, 4ug; Detection:18120-1-AP 1:600) with HEK-293 cells lysate 1120ug.



Immunohistochemical analysis of paraffin-embedded human colon tissue slide using 18120-1-AP (MSH6 Antibody) at dilution of 1:200 (under 40x lens).